

# C A B O O S E

K  
I  
B  
I  
T  
Z  
E  
R



*RACoon VALLEY RAILROAD —Page 14*

MCoR to **KC** IN '25 *Page 10*

## ***ALSO IN THIS ISSUE***

- ◆ Exterior Lamps for HO Scale—Page 22
- ◆ MCoR Master Model Rairoaders—Page 25



**Volume 75, Number 1**

**1st Quarter 2025**

**January—February—March**

© Mid-Continent Region of the National Model Railroad Association  
[www.mcor-nmra.org](http://www.mcor-nmra.org)

## Table of Contents

Page

Division Locations and Contacts.....	3
<b>The Head End</b> .....	<b>5</b>
Larry Diehl	
<b>Fellowship</b> .....	<b>7</b>
David Lowell, MMR	
<b>Editor's Musings</b> .....	<b>9</b>
Pat Hiatte	
<b>MCoR to KC in '25</b> .....	<b>10</b>
<b>Raccoon Valley Model Railroad Club</b> .....	<b>14</b>
Jeremy Harris	
<b>Exterior Lamps for HO Scale</b> .....	<b>22</b>
Ray Brown	
<b>Meet MCoR's Newest MMRs</b> .....	<b>25</b>
MCoR Members Pike Registry .....	27
MCoR Regional Club Rosters.....	28
MCoR Region Resources .....	30

## Caboose Kibitzer Staff

<b>Editor</b> .....	Patrick Hiatte
<a href="mailto:ckeditors@mcors-nmra.org">ckeditors@mcors-nmra.org</a>	
<b>Editor-At-Large</b> .....	Hank Kraichely
<b>Associate Editors - The Yard Crew</b>	
<i>AP Chairman</i> Craig Drenkow, MMR/Marty Vaughn, MMR	
<i>Membership Chairman</i> .....	Whit Johnson
<i>Copy Excellence</i> .....	Robert Simmons
<b>Associate Editors—The Road Crew</b>	
<i>Central Missouri Area</i> .....	Dean Smith, MMR
<i>Chisholm Trail Division</i> .....	Phil Alyward
<i>Cowboy Line Division</i> .....	Craig Drenkow, MMR
<i>Eastern Iowa Division</i> .....	Allen Merta, MMR
<i>Fallen Flags Division</i> .....	John Rietveld
<i>Gateway Division</i> .....	David Lowell, MMR
<i>Great Midwestern Division</i> .....	Whit Johnson
<i>Indian Nations Division</i> .....	James Senese
<i>Kate Shelley Division</i> .....	Richard Liebich
<i>Kansas Central Division</i> .....	Larry Tiffany
<i>Little Rock Area</i> .....	William Hobbs
<i>Nebraska West-Central Division</i> .....	Gene Tacey
<i>Oklahoma Heartland Division</i> .....	Kurt Konrath
<i>Ozark Mountain Area</i> .....	Pamela MacPhail
<i>Platte Valley Division</i> .....	Jim Wells
<i>Turkey Creek Division</i> .....	John Fales
<i>Western Heritage Division</i> .....	Bruce Hochberger
<i>Western Kansas Division</i> .....	Robert Simmons

## The Caboose Kibitzer

The Caboose Kibitzer© is the official publication of the Mid-Continent Region (MCoR) of the National Model Railroad Association (NMRA). Subscription to the Caboose Kibitzer is free.

All MCoR NMRA members automatically receive electronic distribution by e-mail. Non-NMRA members may request free electronic distribution by going to this web page and subscribing:

### [Caboose Kibitzer Subscription](#)

Original, non-copyrighted information and material submitted for publication should be addressed to the Editor, but no payment can be made. Guidelines for submittal are available from the Editor at [ckeditors@mcors-nmra.org](mailto:ckeditors@mcors-nmra.org).

All submissions become the property of MCoR whether or not published. The Editor reserves the right to reject information.

**Deadline:** All items submitted for publication must be received before the dates listed below to be included in the next issue. The Editor will attempt to include the information in the next issue, but there may be a delay because of a backlog.

### Content Deadline

Issue	Due Date
First Quarter	December 1
Second Quarter	March 1
Third Quarter	June 1
Fourth Quarter	September 1

The editorial policy of this publication reflects the opinion of the Editor unless otherwise credited, and does not reflect the policy of MCoR-NMRA.

Any item in this publication may be reproduced unless specifically restricted, but proper credit is requested.

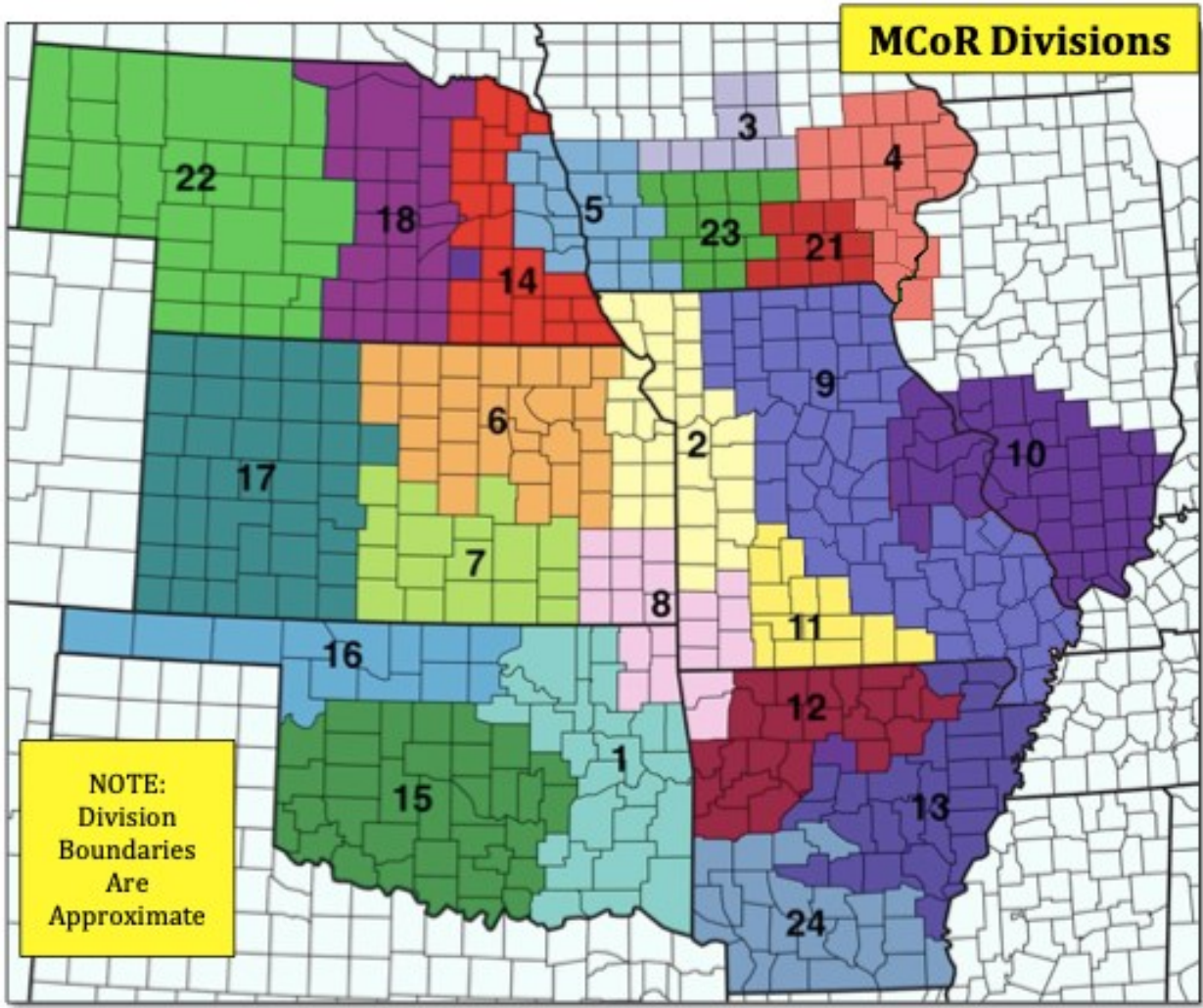
NMRA member E-mail address changes should be directed to the NMRA headquarters at the following link

[nmrahq@nmra.org](mailto:nmrahq@nmra.org)

Application (either online, or printed and mailed in) for NMRA membership may be obtained here:

<https://www.nmra.org/member-services>

**M  
C  
O  
R  
  
D  
I  
V  
I  
S  
I  
O  
N  
S**



Division	Division/Area Name	Director	E-mail	Division	Division/Area Name	Director	E-mail
1	Indian Nations Division	Ray Brunner	<a href="mailto:dir-2901@mcors-nmra.org">dir-2901@mcors-nmra.org</a>	13	Little Rock Area	William Hobbs	<a href="mailto:dir-2913@mcors-nmra.org">dir-2913@mcors-nmra.org</a>
2	Turley Creek Division	Ray Brown	<a href="mailto:dir-2902@mcors-nmra.org">dir-2902@mcors-nmra.org</a>	14	Cowboy Line Division	Craig Drenkow, MMR	<a href="mailto:dir-2914@mcors-nmra.org">dir-2914@mcors-nmra.org</a>
3	Kate Shelley Division	—	<a href="mailto:dir-2903@mcors-nmra.org">dir-2903@mcors-nmra.org</a>	15	Oklahoma Hartland Division	Kurt Konrath	<a href="mailto:dir-2915@mcors-nmra.org">dir-2915@mcors-nmra.org</a>
4	Eastern Iowa Division	Allen Merta, MMR	<a href="mailto:dir-2904@mcors-nmra.org">dir-2904@mcors-nmra.org</a>	16	Northern Oklahoma Area	—	<a href="mailto:dir-2916@mcors-nmra.org">dir-2916@mcors-nmra.org</a>
5	Western Heritage Division	Rick Stone	<a href="mailto:dir-2905@mcors-nmra.org">dir-2905@mcors-nmra.org</a>	17	Western Kansas Division	Robert Simmons	<a href="mailto:dir-2917@mcors-nmra.org">dir-2917@mcors-nmra.org</a>
6	Kansas Central Division	Larry Tiffany	<a href="mailto:dir-2906@mcors-nmra.org">dir-2906@mcors-nmra.org</a>	18	Platte Valley Division	Jim Wells	<a href="mailto:dir-2918@mcors-nmra.org">dir-2918@mcors-nmra.org</a>
7	Chisholm Trail Division	Phil Aylward	<a href="mailto:dir-2907@mcors-nmra.org">dir-2907@mcors-nmra.org</a>	21	Fallen Flags Division	John Rietveld	<a href="mailto:dir-2921@mcors-nmra.org">dir-2921@mcors-nmra.org</a>
8	Maple Leaf Area	Joseph Giunto	<a href="mailto:dir-2908@mcors-nmra.org">dir-2908@mcors-nmra.org</a>	22	Nebraska West Central Division	Gene Tacey	<a href="mailto:dir-2922@mcors-nmra.org">dir-2922@mcors-nmra.org</a>
9	Central Missouri Area	Dean Smith, MMR	<a href="mailto:dir-2909@mcors-nmra.org">dir-2909@mcors-nmra.org</a>	23	Great Midwestern Division	Doug Harding, MMR	<a href="mailto:dir-2923@mcors-nmra.org">dir-2923@mcors-nmra.org</a>
10	Gateway Division	David Lowell	<a href="mailto:dir-2910@mcors-nmra.org">dir-2910@mcors-nmra.org</a>	24	Southern Arkansas Area	—	<a href="mailto:dir-2924@mcors-nmra.org">dir-2924@mcors-nmra.org</a>
11	Ozark Mountain Area	Pamela MacPhail	<a href="mailto:dir-2911@mcors-nmra.org">dir-2911@mcors-nmra.org</a>				
12	Northern Arkansas Area	Tim Force	<a href="mailto:dir-2912@mcors-nmra.org">dir-2912@mcors-nmra.org</a>				



# MCoR NMRA Division Meetings

**Note: COVID-19 cancelled many in-person meetings in leu of ZOOM meetings. And now, some Divisions are resuming in-person meetings. Check before showing up...**

**Division 1: INDIAN NATIONS DIVISION (Tulsa, OK):** Meet 4 times a year. Unless otherwise specified, all Indian Nations NMRA meets are held at the new Hardesty Library, 8316 E. 93rd. St. just east of Memorial Rd. in Tulsa, OK. Library opens at 9:00AM and the meetings start at 9:30AM-12:30. Superintendent - Allan Roecker 918-866-5732 or [allanroecker@yahoo.com](mailto:allanroecker@yahoo.com). Web page: [www.tulsanmra.org](http://www.tulsanmra.org) for meeting dates and additional info.

**Division 2: TURKEY CREEK DIVISION (Kansas City Area):** 4<sup>th</sup> Tuesday every month at 7:00PM except Dec Holiday Party (Dec 17, 2019), at Lakeview Village, 9000 Park Pl., Eastside Terrace Bldg., Lenexa, KS. For current information: Martin Wade, [TurkeyCreekNMRA@gmail.com](mailto:TurkeyCreekNMRA@gmail.com) or the Division Timetable <http://www.tc-nmra.org/TC-Calendar.html>

**Division 4: EASTERN IOWA DIVISION:** Division meetings vary in dates and locations. Contact Bob Perkins, Superintendent, for more information. [rperkins5010@yahoo.com](mailto:rperkins5010@yahoo.com)

**Division 5: WESTERN HERITAGE DIVISION (Omaha, NE/Council Bluffs, IA):** 1st Saturday (except January) at 9:00AM in the Sump Memorial Library, 222 N Jefferson St. (2nd & Washington Streets) Papillion, NE (across from Runza). For the latest, up-to-date information visit the WHD web site at:

<http://www.whd.mcor-nmra.org> or the WHD Facebook page, Western Heritage Division, NMRA.

**Division 6: KANSAS CENTRAL DIVISION:** 1<sup>st</sup> Saturday even-numbered months. Meetings start at 1PM. For the next meeting's location and program please email [dir-2906@mcor-nmra.org](mailto:dir-2906@mcor-nmra.org) or [rkboelling@gmail.com](mailto:rkboelling@gmail.com).

**Division 7: CHISHOLM TRAIL DIVISION (Wichita, KS):** 1<sup>st</sup> Tuesday each month at the Olivet Baptist Church, 3440 West 13th St, Wichita, KS 67203 (13th Street North & High Street). Gathering-6:45PM; NMRA meeting 7:00 - 9:00PM. Info: Dean Lippincott, email [dlipp5a@gmail.com](mailto:dlipp5a@gmail.com)

**Division 10: GATEWAY DIVISION (ST. LOUIS, MO)** 3<sup>rd</sup> Monday each month, 7:00PM. Odd numbered months at Trinity Lutheran Church, 14088 Clayton Road at Woods Mill Rd (Hwy 141), Ballwin, MO. Even numbered months at VFW Hall, O'Fallon, IL. Info: <http://www.gatewaynmra.org/division.htm>

**Division 14: COWBOY LINE DIVISION (Norfolk, NE):** 3<sup>rd</sup> Thursday each month, 7:00PM at HyVee East upstairs meeting room. Corner 1<sup>st</sup> Street and Norfolk Ave. Info: Dennis M. Brandt, MMR, phone 402-992-2415, email [dennisbrandt44@gmail.com](mailto:dennisbrandt44@gmail.com)

**Division 15: OKLAHOMA HEARTLAND DIVISION (Oklahoma City, OK):** meets in the even months in the Oklahoma City area. Contact OHD Director at [dir-2915@mcor-nmra.org](mailto:dir-2915@mcor-nmra.org). All who are interested in Model railroading are welcome.

**Division 17: WESTERN KANSAS DIVISION (Dodge City, KS):** Meetings pending a new location. Info: Robert Simmons, Division Director, 620-521-3591(C) or 620-272-0444(H). Facebook page "Western Kansas Division"; e-mail: [trainman55@hotmail.com](mailto:trainman55@hotmail.com)

**Division 18: PLATTE VALLEY DIVISION (Hastings, Grand Island, and Kearney, NE):** Meet quarterly in members homes on a rotating basis or at sites of interest. New members are always welcome. Info: Jim Wells, Division Director, 402-705-1048 or [dir-2918@mcor-nmra.org](mailto:dir-2918@mcor-nmra.org)



# The Head End \*

By Larry Diehl, President MCoR

The last few months were very busy. First, we had an opportunity to have MCoR combine into the National Narrow Gauge Annual Convention in St. Louis. It just did not work out. Three months of negotiations. I think another day or another year, the Narrow Gauge and NMRA will combine their efforts for a "Super Convention"!... but not today!

Second, we continue to face declining activity, especially in more remote areas of our region. Some success with "Zoom like" participation dialing into programs that are "broadcast setup." Such as, St. Louis Gateway Division, Kansas City

Turkey Creek Division and the National Narrow Gauge Groups Broadcasts. Popularity is slowly growing, allowing some remote persons chances to participate in clinics and presentations. If any of you reading this have desires to "Zoom-in" to these offerings, please contact me at [ldiehl066@gmail.com](mailto:ldiehl066@gmail.com) (Larry Diehl).

The NMRA is turning 90 years old this year, 2025. Some special activities are being planned. I'll keep you informed as I know them. I believe some special things are to show up at the NMRA Annual Convention being planned in Novi, Michigan, a suburb of Detroit.

\* All sections except the last will display two green flags . . .  
- Uniform Code of Operating Rules



Like no other NMRA National Convention you have ever attended!

BIG low price for everyone!! NMRA National Convention

Easy suburban location with free parking! NMRA National Convention

Yard Sale room, National Train show = buy/sell! NMRA National Convention



## The Head End—Second Section

By Larry Diehl, President MCoR



MCoR to KCS IN '25

MCoR is planning a unique regional convention in 2025. You all spoke!!

- ☑ Consider short convention.
- ☑ Reduce costs for member attendance.
- ☑ What can you do to “spice up” the convention?

We have secured the Holiday Inn in Lenexa, Kansas (same place we met in 2023). We have been able to negotiate what I feel is a “value stay.”

At \$99/night plus tax (vs. normal rate of \$159).

We are planning a 2-day convention, Friday afternoon and evening plus Saturday train show/layout tours/evening banquet/speaker/auctions and fun. We will have optional activities for Thursday evening and Friday morning for those who want to arrive early. The low room rate will apply to early arrivals.

We are holding the registration fee as low as possible at \$115, including banquet, plus dessert buffet Friday evening and lunches. I’m taking a risk that the cheaper cost will attract more attendance, resulting in overall better revenue.

We are planning a “special” model contest category “The Best KCS Model”, which will include associated railroads of the Kansas City, Pittsburg and Gulf (the Pee Gee RR) and the Kansas City, Mexico and Orient RR started by Ar Stillwell, 1902 thru 1928. Contemplating including “The Belt Line” (not yet decided).

The KCS started in Kansas City with The Belt Line and then the Pee Gee RR. Stillwell bankrupted the Pee Gee around 1898, lost the railroad to other investors then started the “Orient” RR. Recently the KCS merged with the Canadian Pacific continuing its success. I’m in question whether we should include any models of the new merger. (Thoughts anybody!)

We are trying to secure special clinics directed to these railroads, to include presentations on overall historic development of these railroads.

Looking forward to this variation in our convention and hope everyone of the region has the opportunity to attend. We need small models built by some of the members to be used in the live auction. I encourage everyone to consider bringing a model to participate in the KCS category. The award will be a very special nice plaque for Best of the Category. I know of a few KCS railroads and one in Oklahoma. Please participate! I am on the brink to sending out all the flyers and convention registration sheets.

See Page 11 for more information and Page 14 for a registration form.

Hope everyone had a good Christmas! Enjoy!

Sincerely,  
Larry W. Diehl  
President MCoR



# Fellowship

By David Lowell

*Editor's Note: This column was originally written for the Gateway Division newsletter, but it applies to all NMRA members in the Mid-Continent Region and beyond.*



Human beings are pack animals and as such we crave fellowship. Wherever we may find it, it is an important nutrient for our souls. Most of our favorite stories are about fellowship; literature and movies are one

record of true and imagined stories of fellowship based on the premise stated by C.S. Lewis of, "We had a little trouble along the way." English Zoologist Desmond John Morris studied the human condition examining our hardwired need for fellowship and the involuntary (animal) behaviors associated with it. Because it is rooted so deep in our psyche we all seek it where we can. Some find fellowship through their religion, other through common causes, experiences, interests or myriad other venues. But really I think most of us get it through a combination of many avenues which is the segue to fellowship and the National Model Railroad Association.

If you are reading this, most likely you are already in the fraternity of the NMRA, having already sought and hopefully found kindred spirits to fulfil your need for fellowship within the hobbyshere of all things railroading. I have used the term "hobbyshere of all things railroading" before, and will continue to do so in the future. To me it is an all-encompassing description of the multi-faceted hobby we share. But like so many thing in our lives the vastness

of our hobby is too much for one person to get their head around it all, so we choose pieces that appeal to us the most. To these pieces, areas, or subcategories we allocate our valuable leisure time to pursue our focused interest and try to sate our quest for knowledge on the topic(s) we have chosen. With any luck at all that rabbit hole will be bottomless and if you're not careful you might learn something every day.

The hobbyshere of all things railroading gives a wonderful and unique dichotomy. The fellowship that we share in the NMRA gives us the opportunity to be both teachers and students at the same time. This aligns, interestingly enough, with the first sentence on the NMRA website under the Education heading which says, "Education is central to the NMRA's mission and an essential component of our continued classification as 501(c)(3) Charitable Organization under the Internal Revenue Code." Seems that maybe fellowship is part of the NMRA masterplan, we do have a lot of social events after all.

What better way is there to build fellowship than to share with and learn from friends on a subject you have in common whether in a formal or informal setting? Each month the Gateway Division's Assistant Superintendent schedules clinics for our meetings and the topics cover the full spectrum of our hobby. While I may not be intimately involved in a particular topic, let say Arduinos, I still find it fascinating to listen to a fellow modeler teach me about the endless possibilities of their use in the hobby. This spills onto all the other areas of interest within the hobby; model building and showing, operations, history, prototypes, writing articles, producing Division, Regional, or even National publications, sitting around for a libation at a regional or nation convention telling stories, having lunch together at the Fall meet and the list goes on and on.

All of the above are activities that bind us as

members of the NMRA and feed our need for fellowship and strengthen our friendships. Feed your need for fellowship and friendship and come participate.

I challenge you to find and follow your own path to fellowship.

What would happen if each one of you made only an incremental effort to participate just a little more.

- Come to a meeting at least once a year if you come to none.
- If you only come to a meeting of your own division or area, come a little farther and expand your horizons.
- Share your knowledge. I know many of you are a wealth of knowledge on a particular topic, or many. I want to learn and I want to

know what other modelers and rail fans are up to.

- Enter just one model in a division, are or region meet.
  - Take a shift at the PR table at a show and get in free!
  - Or, come to one of many other activities.
- We, as a group, can make this incremental increase happen. Look at what we are already doing!

Happy Rails

David C. Lowell  
Director,  
Gateway Division, Mid-Continent Region  
National Model Railroad Association



## Light At The End of the Tunnel!

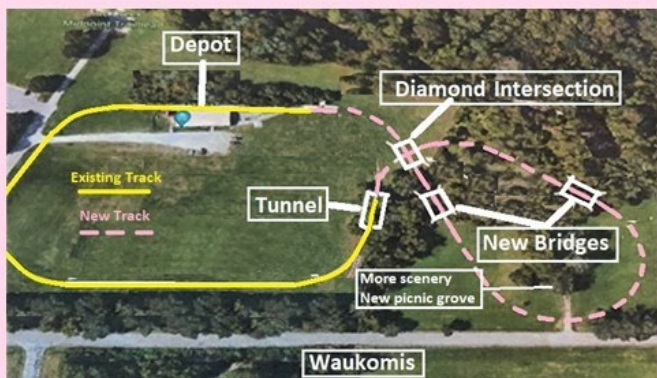
### Match the Grant!



**A \$125,000 donation is ours if we raise \$125,000 by June 30, 2025.**

***The \$250,000 total will meet our expansion goal!***

Please help us get the \$125,000. Tell your neighbors, friends, relatives, and coworkers about us. Post this flyer at your schools and parishes. Ask them all to donate. A lot of donations added up will get us there. Clock is ticking, we have until June 30, 2025 to pull this off.



Kansas City Northern Miniature Railroad  
6060 NW Waukomis

<https://kcnrr.com>

GoFundMe

Facebook



Want a copy of this flyer? [kcnrailroad@gmail.com](mailto:kcnrailroad@gmail.com)





# Editor's Musings

By Pat Hiatte

## Introducing the Sedalia Sub

You'll be reading more about the Missouri Pacific Railroad's Sedalia Subdivision in future issues of the *Kibitzer*. It's your editor's N-scale layout and on many levels illustrates my approach to model railroading.

The prototype Sedalia Subdivision ran between Jefferson City and Kansas City via Sedalia. It was MP's first route across western Missouri, with steep grades and sharp curves consistent with its construction in the late 1860s.

Construction equipment and methods had progressed by the time the River Subdivision between the same two terminals was completed in 1888. It wasn't long before the River Sub with its water-level grades became the primary route for freight trains between Jeff and KC

The Sedalia Sub, however, continued to host all passenger services during my ear. The fact that it ran through such population centers as Sedalia and college town Warrensburg, as well as Lee's Summit and Independence helped cement its status as THE route for passenger trains.

Further supporting the choice of the Sedalia Sub as the basis for the layout was my interest in passenger trains: I used to watch the westbound Colorado Eagle make its station stop at Jeff City on Wednesday evenings, and the first locomotive I remember as an individual (not just "an engine") was 8008, an Alco passenger unit.

The early 1960s were the last hurrah for passenger service in my neck of the woods.

Trains still handled most of the mail in Railway Post Offices and bulk in baggage cars, a thriving express business, full dining cars and Pullmans. An era I remember fondly if hazily.

Some look down on "armchair model railroading", but it played an essential role in the development of the Sedalia Sub. Intensive thought (otherwise known as day-dreaming) developed these design goals.

- Ability to operate a full day's worth of trains, including passenger, through freight and local freight, all per the schedules effective in 1962.
- Ability to use both blue-and-gray and solid blue paint schemes for locomotives and passenger cars. (Limited availability of rolling stock painted and lettered for MoPac, especially in N scale.)
- Operation by a crew of no more than four. (Space limitations and the layout's

location in a rural area made a larger crew impractical.)

- Maximum train length of six cars for passenger trains and 12 cars for freights. (Long enough to look to me like a train but short enough to allow for two train lengths of distance between towns.)

Those primary goals made track planning much easier. More about that in future columns.

Our readers would be interested in your experience with armchair model railroading. Please drop me an email to [ckeditors@mcpr-nmra.org](mailto:ckeditors@mcpr-nmra.org)

Station Numbers		Miles from St. Louis — Seventh Street	<b>SEDALIA SUBDIV.</b> <b>TIMETABLE</b> <b>No. 99</b> <b>OCTOBER 30, 1955</b>	
<b>STATIONS</b>				
125	125.33	Note 1	CS. Jefferson City. @DWY	Two Main Tracks
...	127.95			
132	132.41		P. .... SCOTT .....	
140	140.26		P. .... CENTERTOWN .....	*
144	144.72		P. .... McGIRK .....	*
150	150.38		CS. .... CALIFORNIA .....	@*
156	156.63		P. .... CLARKSBURG .....	*
162	162.87		LS. .... TIPTON .....	@*
168	168.13		TP. .... SYRACUSE .....	*
175	175.75		P. .... OTTERTVILLE .....	*
181	181.11		LS. .... SMITHTON .....	*
	181.18			
...	187.79		CS. SA TOWER—M.K.T. CROSSING ...	
188	188.94		CS. .... SEDALIA .....	@WY

Plan to Attend

# 78<sup>th</sup> Mid CONTINENT REGIONAL CONVENTION

MCO<sup>R</sup> to **KC** IN '25

## AUGUST 22<sup>ND</sup> & 23<sup>RD</sup>

... Friday and Saturday ...

Lenexa/Kansas City

hosted with and overlaying

Turkey Creek Division Annual Show

Special Clinics



and Contest

Clinics

Modeling Photo Contest

Dessert Bar & Ice Cream

Speakers

Train Show

More Clinics

Turkey Creek Model Contest

Layout Tours

Banquet

Good Food

Speaker

Chinese Auction

Live Auction

Fun!



## Expected Schedule

# MCoR to KC IN '25

Friday the Convention starts with clinics around 1:00 pm. Intent is to give you time to drive into the Convention on Friday morning.



Holiday Inn & Suites  
Overland Park, KS

Friday will feature clinics related to Kansas City Southern, then interesting clinics on modeling and layout operations.

We are planning a couple of photo presentations on Friday morning for those who come early.

The model and photo contest room will open at 1:00 pm for displays and judging. Friday will be the only day for the contest model viewing and judging. Wrap up the judging Friday evening. Present award plaques at Saturday evening banquet.

We are overlaying MCoR activities onto the Turkey Creek Division Annual Train Show with its own separate contest, awards and clinics Saturday morning through early afternoon. Their awards will be presented Saturday afternoon in a separate presentation. Turkey Creek Show is open to the public.

MCoR clinics will be Friday afternoon, MCoR contest room will start Friday at 1:00 pm, contest and judging will be complete Friday evening. All winners will be determined by NMRA judging scores. MCoR is planning a “Dessert Snack Bar” Friday evening. Maybe ice cream and pie! Trying to arrange a short presentation or speaker to highlight the evening.

Turkey Creek is planning to have six (6) more clinics Saturday morning. Turkey Creek will also host a contest room with awards presented in early afternoon. Winning is based upon popular vote. All MCoR attendees can also submit their models to this contest.

Home layout tours are planned for Saturday afternoon.

MCoR will host our banquet on Saturday evening. Planning for:

- A nice dinner with cash bar
- A guest speaker (somewhat shorter in length)
- Awards for model and photo contest
- Special award for KCS category
- MCoR Service Awards
- A “Chinese Auction”! (with tickets being sold at banquet)
- A short live auction (member built items)

Don't forget about the special contest category soliciting entries on KCS/pre-cursor railroads. It will be a very nice special plaque! See the eligible railroads which will count as KCS and its evolution.



Hope you all enjoy

and welcome the shortened convention schedule, economy motel costs! ... so you can spend more money at the train show!

Larry W. Diehl  
Your MCoR President

**PLEASE COME ... PLEASE ENJOY!**



MCoR to **KC** IN '25



Mark Your Calendar

Mark Your Calendar

# NMRA Mid Continent Region Convention

Having special focus on the KCS System, History, Contest Category ...  
THE "SOUTHERN BELLE" passenger service to points South!

Hosted by  
Turkey Creek Division  
August 22nd & 23rd, 2025  
To be held at  
Holiday Inn & Suites  
8787 Reeder Street

## Registration Form

Name of Primary Registration: \_\_\_\_\_ NMRA #: \_\_\_\_\_

NMRA membership required to enter model contest.

Spouses's Name (if attending): \_\_\_\_\_ (keep name tag for banquet)

Name of other registrants: \_\_\_\_\_

(Spouse will receive a complimentary pass for admission to include the train show and banquet meal w/name tag.  
other Extra fare participation must be purchased for each person attending.)

Address: \_\_\_\_\_ City: \_\_\_\_\_ State: \_\_\_\_\_ Zip: \_\_\_\_\_

E-mail: \_\_\_\_\_ Phone: \_\_\_\_\_

Are you registering as a Vendor? Yes \_\_\_ No \_\_\_ no MCoR registration needed...select wanted "Extra Fare Events".

**Registration Fee** (NMRA membership number required for reduced registration fee.)

NMRA member \$115.00 per person (includes Turkey Creek Train Show) .....  
Non-member - \$135.00 per person (includes Turkey Creek Train Show) .....

Cost	# Persons	Total Cost
\$115.00		
\$135.00		

### Extra Fare Reservations:

Lunch Friday 11:00 am to 1:00 pm ("box sandwich etc.) .....	\$14.00	
Friday Dessert Bar at 6:30 pm, per person, including spouse .....	\$18.00	
Lunch Saturday 11:00 am to 1:00 pm (box sandwich etc.) .....	\$14.00	
Saturday Banquet (cash bar) choose 1 per person .....	\$30.00	
<small>(if a vendor wants to attend the banquet, this extra fare applies to each person)</small>		

**TOTAL REGISTRATION:**

### Vendor Tables for Saturday Train Show Swap Meet (Vendors must register but no base fee)

are being reserved and paid for through separate Turkey Creek Registration forms.  
(to be available soon)

Send Completed Registration Form to:  
Larry Diehl  
7008 Millridge Street  
Shawnee, Kansas 66218  
ldiehl066@gmail.com  
for any additional information call (816)804-0152

MAKE HOTEL RESERVATIONS WITH HOTEL  
OR CLICK LINK BELOW  
Holiday Inn & Suites  
8787 Reeder Street  
Overland Park, Kansas 66214  
(913)888-8440  
Rate: \$99.00 (includes breakfast)  
Ask for MCoR/NMRA group rate  
[www.holidayinn.com/overland-parkw](http://www.holidayinn.com/overland-parkw)



# Raccoon Valley Model Railroad Club

By Jeremy Harris; photos by the author



The Raccoon Valley Model Railroad Club is an operations-oriented club loosely based off the Rock Island main line that came through Des Moines. The original Raccoon Valley was started sometime in the 1970s. But after a fire in the back of the nearby Beggers Banquet restaurant, part of the membership went and started the Central Iowa Railroad Club, and the other diehards kept the Raccoon Valley alive and going as we know it today. The club is located in the basement of the Crown Point Center strip mall off of Merle Hay Road and hosts an open house the first Friday of every month.

The club has a large two-rail O Scale layout, and a large three-deck HO layout, both set in the steam-diesel transition period from mid-1950s through the early 1960s. We also run On3, On30, and HO3. Both layouts run on Digitrax, duplex on the HO layout and both simplex and duplex on the O scale. There is a large staging yard on the lowest deck of the HO layout. It represents Chicago, Omaha, and Valeria, Iowa.



*Staging yard on HO layout's bottom level is well lit.*

The HO layout mainline interchanges with the Minneapolis & St. Louis; Illinois Central; Waterloo, Cedar Falls & Northern; Des Moines & Central Iowa; Chicago Great Western; Fort Dodge, Des Moines & Southern; and Chicago & Northwestern. There are several industries in each town that get pulled and spotted each session. There is a large eight-track yard that represents Shortline Yard.

Operations vary with crew availability; regular trains include local freights serving Davenport and Colfax and as many through trains as crew availability allows.

The 300 cars owned by the club move according to the familiar car card and waybill system, with motive power furnished by individual club members. Trains move under simplified Track Warrant Control (TWC) known as "Mother may I".

Guest operators and their DCC-equipped locomotives are welcome; the HO layout supports duplex Digitrax operations.



*Main yard represents Des Moines' Shortline Yard*



*Colfax engine terminal is a busy place; first- and early second-generation diesels are well represented*



*The club operates a wide variety of trains*







*Above: A model railroad is never really finished, and work on scenery continues with the help of the mini work station in the middle of the image. Monday nights are work nights.*



*Left and below: There's plenty of room between the two decks, allowing easy access during operating sessions.*





*Small towns allow plenty of switching opportunities.*



# Best-laid plans . . .



*The club's sense of humor  
Is evident in these scenes at the roundhouse.*





*As one of the prominent towns on the layout, Colfax merits a substantial passenger station.*



*Yard office is the Colfax hub of the Des Moines & Central Iowa.*



*What looks like a giant track-cleaning block below and to the right of the yard office is actually Picnic Rock, a handy place for crews to take their breaks.*



*Grand Junction, above, connects the standard-gauge and HOn3 lines; scenery gets more Western in the area.*

The club is accepting new members; dues are \$50 monthly. More information is available via email to [sajeharris@sbcglobal.net](mailto:sajeharris@sbcglobal.net).





# Exterior Lamps for HO Scale

By Ray Brown

I wanted an exterior lamp reflector light for my small buildings, barns, and houses. I bought some that said they were HO, not. When I received them they were large. Measuring 2 foot 4 inches wide and 4 foot from the center of the light to the wall. They would work on S or O scale, but unless you are putting them on a large industrial building where you might want a large light, they don't work for HO.

This is my answer to the problem.

These are the materials and tools you will need.



Tichy number 8027 lamp reflectors - Tichy  
K and S number 9830 1mm Brass tubing - Amazon  
.0402 LED prewired lights - 50 pcs ZZHOB - Amazon  
Loctite ultra gel superglue  
(any gel glue would probably work)  
Small quarter inch wide strip of wood or styrene

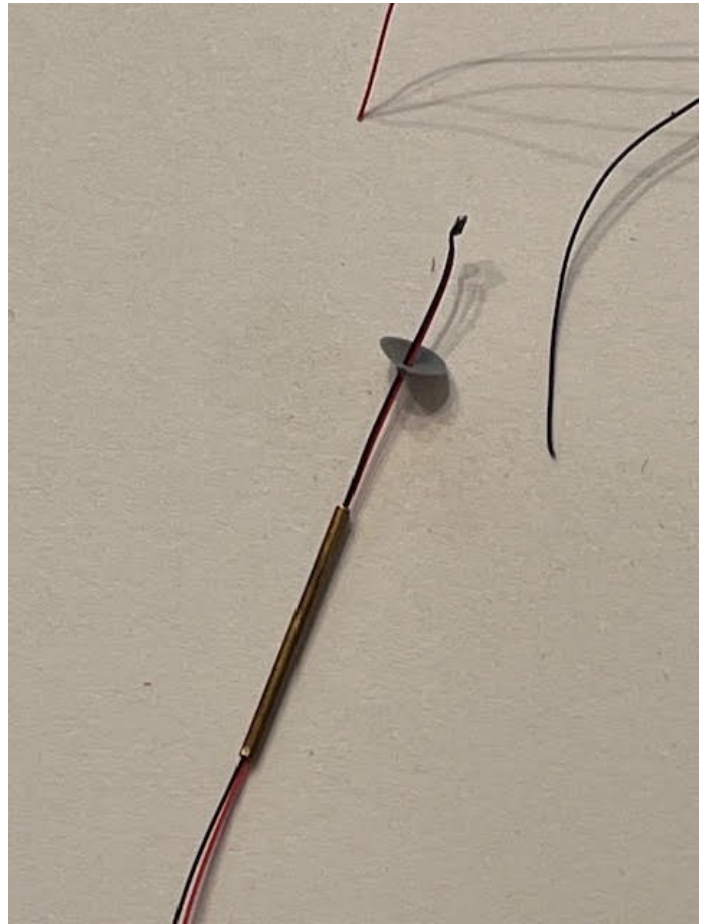


Dremel with diamond cut off wheel  
Fine Emery Board  
Finger drill with number 67 bit  
Round nose pliers

Start by cutting off the top of the lamp reflector. It will crimp a little, so take the fine emery board and sand it flat. Cut a piece of brass tube the length you need, it's better to be too long, than too short. The extra length can be put inside the structure. Use the Dremel to cut it. Using cutters or nippers will crimp the end, making it harder to work with. You can also use a jeweler saw. Sand the ends flat with the fine emery board. Use the drill with the number 67 bit to drill both ends of your brass tube. Only a few turns. You want to make the ends a little inverted cone shaped. This will make it easier to thread the wires.

Your lights will come with resistors. Cut the resistor off leaving enough wire to reconnect it if you need to later. Take the stiff wire on the end of the resistor and feed it through both ends of your brass tube. This will clean out any burs that might be there. Do the same with your reflector to clean out the center hole.

Now you are ready for the light. First, make sure both wires are cut off straight. The wire that you cut off the resistor should be OK. The other wire will probably be stripped with stranded wire sticking



out. Cut this off, it will make it easier to thread the wire. I bend the head of the light so it will shine straight down when pulled through the reflector. Feed the wires through the reflector. I do one wire at a time, but if you want to do both at the same time go for it. Now you're ready to thread the wire through the tube. I do one at a time, but it's up to you.

Now you have the wire, reflector and tube altogether. Pull the wire tight make sure that the reflector is centered on the tube. Put a drop of gel glue on the joint between the reflector and tube. Take the flat strip of wood or string and rotate the brass tube, smoothing out the drop of glue as you go. it should smear around the whole tube making a smooth joint. Let this dry.

After it is completely dry, you need to decide what kind of light you want.

Start at the end of the tube, closest to the reflector. Using the round nose pliers bend the shape you want. The possibilities are endless.



Painting, you can paint the inside of the reflector before feeding the light through or after. I use white to help reflect the light. Paint the reflector and the tube after you are done bending. I typically use green, but it is your light; paint it whatever color you want.

For a canopy on the wall, I use a piece of black construction paper. Usually a square piece, but you can do round. I drill a hole with the number 67 bit in the paper, then cut around the hole. It is easier to cut around the hole rather than trying to drill a hole in the center of a small piece of paper. I have not done a round canopy but what I think I would do is drill the hole in the paper, then cut it out with a hole punch. Feed the wire and tube through the hole in the paper. Leave the canopy loose. Feed the wire and tube through your wall and glue where you want it. After the glue is dry slide the canopy to the wall and glue it in place.

If you want a prototype size light, this is how I do it. Good luck!





# Greg Gramlich

Master Model Railroader #773

Gateway Division ... St. Louis



*Congratulations Greg!*

Greg achieved many of his AP Certificates in the last few years, achieving MMR status just a few months ago.

Congratulations!

Greg models aspects of the Southern Pacific and the Cotton Belt Route on his Bear Creek Model Railroad.

# David C. Lowell

## Master Model Railroader #775

Crestwood, Missouri

**Gateway Division ... St. Louis**



## *Congratulations David!*

David is an excellent modeler, is competitive and a hard act to beat! He took several awards in Grand Island, NE at the 2024 Regional meet. David presents several clinics relative to operations on prototype railroads following his modeling. He currently serves as Director of the Gateway Division and is involved in all of the local conventions/ events.



# MCoR Member's Pike Registry

The Pike Registry is a free MCoR member benefit for layout owners that would welcome other NMRA member's visits. For more information, contact

[ckeditors@mcpr-nmra.org](mailto:ckeditors@mcpr-nmra.org)

## Indian Nations Division

## Eastern Iowa Division



The Deep River Southern Railroad is a freelanced N-scale layout set in 1958. It's located in a room above the garage and is a 2-level layout designed for operations using Car Cards and Waybills. The layout is wired for DC and can accommodate 4 operators. A manual elevator connects the 2 levels. Scenery is about 90% done.

### Dogwood & Redbud Shortline

The Dogwood and Redbud Shortline is my 7.5"-gauge backyard railroad that is a 550' loop with numerous bridges—two cross a creek and others are for drainage. A Super Mack, Critter, and Speeder provide the motive power and are all battery operated.

Come by, take look, go for a ride, let's operate.

Dave Salamon (918)607-2793 E-mail: [drs\\_rr@yahoo.com](mailto:drs_rr@yahoo.com)



Corn Country Rails is an N-scale layout primary featuring the Rock Island Railroad in the 1950s. The layout depicts a 47 mile stretch of Rock Island's Eastern Iowa single track mainline from Homestead to Grinnell. The multi-deck layout with a helix measures 15 x 20 feet. Additional staging is in an adjacent room. It was designed for operations using four-cycle waybills, train orders, and a 3:1 fast clock. A typical operating session can keep 6-8 operators busy for about four hours with eight mainline trains, two locals, and several extras worked into the schedule. The layout is powered by an NCE DCC system with both radio and plug-in throttles. The scenery is based on rural farming towns and Iowa countryside in the summer months.

Tony Bowen, MMR – Division Superintendent

E-mail: [railroadteacher@gmail.com](mailto:railroadteacher@gmail.com)

YouTube Channel: Corn Country Rails

## Chisholm Trail Division

## Central Missouri Area



### Union Pacific Through the Rockies



My HO layout is a "freelanced/fictional" version of the Union Pacific in the 60's/70's on the Rio Grande's Route thru the Rockies. In a 13'x20' room, the layout is two levels connected by a 5 loop helix. The double track mainline is approximately 300 running feet with two small switching yards. NCE DCC supplies the power for the layout. The equipment roster shows UP F-Units, GP 38's and 40's, and UP/RGSD 40-2T's. Freight cars of all types supply the revenue for the line. You will see an occasional passenger train as well. 60% of the layout is landscaped and on the rest has industries/buildings in place—just not completed scenes. Industries served include coal, grain, fuel, and misc. LTL freight loads.

Terry Ross, Sup.

E-mail: [terryross16@hotmail.com](mailto:terryross16@hotmail.com)



### Clear Creek and Quicksilver RR

The layout is a 1:20.3 indoor/outdoor layout. Outdoors has landscaping that depicts the Georgetown Loop Devil's Gate high bridge. Indoors is a logging theme railroad with basic benchwork and 250 feet of roadbed and still growing. Three locomotives have been converted to battery power with more planned.

Allen Pollock

E-mail: [pollocka@mchsi.com](mailto:pollocka@mchsi.com)

## Western Kansas Division

## Little Rock Area



### Western Kansas Rails

The WKR is an N-scale, sectional layout housed in its own building (but also transportable) depicting Western Kansas. The layout measures 18x24 feet and was designed for simple operations to introduce train show spectators to the idea of operations. The third main features two staging yards, three passing sidings, and nine industries to be served powered by Digitrax DCC with radio throttles. The scenery is based on life in Western Kansas with real business names and mostly scratch-built structures, including the signature structure of the Dodge City Pride Ag Co-Op grain elevator that measures nearly 6-feet in length and dominates the skyline. Operating sessions are available.

Robert Simmons – Div. Sup.

E-mail: [trainman55@hotmail.com](mailto:trainman55@hotmail.com) Phone: (620) 521-3591



### Missouri Pacific RR – McRae Subdivision

The fictional subdivision of the MoPac is a shelf type HO model railroad occupying a 14X20 foot room and operating with CVP EasyDCC. The railroad consists of the town of McRae, Arkansas, and the now abandoned station and the active interchange track (known as Hog Thief Crossing) with the fictional Argenta, St Joe and Northern Railroad. McRae and Hog Thief Crossing account for extensive traffic, especially during strawberry season when huge quantities of strawberries are shipped to all parts of the country. There are 5 lengthy staging tracks to supply 2 daily passenger trains, 4 freights, and 3 locals to keep operators busy running on a fast clock.

David Bogard – Div. Sup. E-mail: [mopac55@hotmail.com](mailto:mopac55@hotmail.com)

## Western Heritage Division

## Gateway Division

A freelanced version of the D&RGW Floresta Branch which ran eleven miles west of Crested Butte to a large CF&I Anthracite Mine and Breaker at Floresta, Colorado. Layout is 14'x24' point to point in On3 which I refer to as 'Poor Man's On3.' I have regularly scheduled operation sessions and welcome new operators.



Bill Grierson, Agent. Omaha, Nebraska, email: [wgrierson17@gmail.com](mailto:wgrierson17@gmail.com)

### CB&Q RR-Hannibal Division

The K line. STL--Hannibal & a branch Old Monroe to Mexico, MO are modeled on a DD deck layout 425' of main and a 75' branch in code 83 with DCC controlling 18 trains plus 5 locals & coal & Cattle trains. Featured is a 22' long Cement plant, a quarry 5' W X10'L X 3' D + large foundry & Brick plants. Plus 5 towns with fuel dealers, grain elevators and other small shipper

Hank Kraichely-Div.Sup. to contact:

Email: [hkraichely@sbcglobal.net](mailto:hkraichely@sbcglobal.net)



# MCoR Regional Club Rosters

This roster is created for the benefit of members of the MCoR Region. Clubs (NMRA or Non-NMRA) wanting to be listed contact [ckeditors@mc-or-nmra.org](mailto:ckeditors@mc-or-nmra.org)

- AR, Bella Vista**      **All Scales**  
*Sugar Creek Model Railroad & Historical Society, Inc.*  
PO Box #5452, Bella Vista, AR, 72714  
Information: <http://sugarcreekrailroadclub.com>
- AR, Conway**      **HO Scale**  
*Central AR Model RR Club*  
PO Box #1825, Conway, AR, 72033  
Contact: Daniel Gladstone (501) 269-3030
- AR, Little Rock**      **G, HO, N Scales**  
*Southwest Independent Modular Railroaders*  
3107 West Capitol Avenue, Little Rock, AR, 72205
- AR, Shannon Hills**      **HO, N, O**  
*Crooked Rails Modular Club*  
10701 Shannon Hills Dr, Mabelvale AR 72103. Meetings 10AM Saturday. 40' x 18' traveling layout plus HO, N, and O scale at club. Visitors welcome. Contact David Ware (501-664-1923) or Charles Dempsey (510-917-5790)
- IA, Coralville**      **HO Scale**  
*Hawkeye Model Railroad Club*  
860 Quarry Rd., Coralville, IA 52241. Club entrance SE corner across street from Konami Rest. Meetings: Wednesdays 7-9PM; Visitors welcome; Check website for Saturday Open House. Contact: Tom Persoon, Public Relations Officer, [Persoon06@msn.com](mailto:Persoon06@msn.com); (319)-351-0247. Website: <https://hawkeyemodelrrclub.com/> Facebook: @HawkeyeModelRailroadClub
- IA, Council Bluffs**      **HO Scale**  
*Greater Omaha Society of Model Engineers*  
Contact: Brian Waters, Post Office Box 67, Council Bluffs, IA, 51502; (402) 895-0296 or (402) 491-3692  
Information: [SOME@TheHistoricalSociety.org](mailto:SOME@TheHistoricalSociety.org)
- IA, Des Moines**      **HO Scale**  
*Central Iowa Railroad Club*  
Iowa State Fair Grounds  
Contact: David Briely, PO Box #118, Des Moines, IA, 50301 Phone:(515) 266-8899  
Information: <http://www.facebook.com/centraliowarailroadclub>  
Meets: 1st Tuesday each month; Open House: 4th Friday each month.
- IA, Harlan**      **N Scale**  
*Nishna Valley Railroad Society*  
1303 Eighth Street, Harlan, IA, 51537
- IA, Indianola**      **HO Scale**  
*Warren County Modular Railroaders*  
Transition era. RI and CB&Q  
Contact: John Averill, 14910 92nd Lane, Indianola, IA, 50125; (515) 961-3018  
Iowa's only 100% NMRA club
- IL, Collinsville**      **HO Scale**  
*Columbia Model Railroaders*  
410 Camelot Drive, Collinsville, IL, 62234
- IL, Glen Carbon**      **HO Scale**  
*Metro East Model Railroad Club*  
180 Summit Avenue, Glen Carbon, IL  
Contact: Bill Davis or Bob Gibson  
email: [memrrc@gmail.com](mailto:memrrc@gmail.com)  
Information: [www.trainweb.org/memrc](http://www.trainweb.org/memrc)  
Work/run meetings 6:30PM every Thursday at Club House; Business Meetings first Thursday each month. Visitors always welcome!
- IL, Marion**      **HO Scale**  
*Southern Illinois Train Club*  
PO Box 1633, Marion, IL, 62959
- KS, Augusta**      **HO Scale**  
Augusta Model Railroad Club, 6<sup>th</sup> & School St., 7:30. Information: [info@augustahorrrclub.org](mailto:info@augustahorrrclub.org)
- KS, Atchison**  
*North East Kansas Model Railroaders*  
12" scale, 1440 N. 6<sup>th</sup> St., Atchison, Sat. 10:00-4:00PM, Sun. 12:00-4:00PM. Information: Otto Wick 913-367-7536
- KS, Cherryvale**  
Leatherock Hotel, 2<sup>nd</sup> floor, 420 N. Depot St., Cherryvale, Information: John R. Dhooghe, [john@cvmrc.com](mailto:john@cvmrc.com) or [www.cvmrv.com](http://www.cvmrv.com)
- KS, Cherryvale**      **All Scales**  
*Parsons Model Railroad Engineers*  
Cherryvale Depot, Cherryvale, KS, 68335
- KS, Ellis**      **HO Scale**  
*Kansas Pacific Model Railroad*  
Ellis Museum, 911 Washington, 10:00AM. Lunch at a restaurant afterward. Information: Tom Robinson, [railway@gbta.net](mailto:railway@gbta.net)
- KS, Frankfort**  
*Frankfort Subdivision*  
416 W. 1<sup>st</sup> St., 10:00-3:00PM. Information: Joe McAtee, [joem@bluevalley.net](mailto:joem@bluevalley.net)
- KS, Dodge City**  
*Western Kansas Rails N-Scale Layout*  
10594 W. Briarwood Dr., Information: Robert Simmons, 620-521-3591
- KS, Great Bend**      **N, HO, O, G, Standard**  
*Golden Belt Model Railroad Association.* Meet first Tuesday of Each Month @ 7:30PM at the First United Methodist Church, Great Bend. Correspondence to 209 E 6th, Ellinwood, KS68526, Jim Loesch,
- KS, Hutchinson**      **N Scale**  
*Kansas Central Model Railroad Club*  
16 E. 3<sup>rd</sup>, Hutchinson, 11:00-4:00PM. Information: [www.kansascentralmodelrailroaders.org](http://www.kansascentralmodelrailroaders.org)
- KS, Lawrence**  
*Lawrence Model Railroad Club*

- Bridge Pointe Community Church, 601 W. 20<sup>th</sup> Terrace. Information: [www.lawrencemodelrailroadclub.org](http://www.lawrencemodelrailroadclub.org)
- KS, Manhattan HO Scale**  
*Manhattan Area Rail Joiners*  
 Contact: Don Clagett, 1223 Pierre Street Manhattan, KS, 66502; (785) 537-7624  
 email: [dClagett@ksu.edu](mailto:dClagett@ksu.edu)
- KS, Olathe HO Scale**  
*MO-KAN Rail Joiners*  
 Contact: Louis Seibel, 1069 North Logan Street, Olathe, KS, 66061; (913) 393-3495 or (913) 927-6850  
 eMail: [L-seibel@comcast.net](mailto:L-seibel@comcast.net)
- KS, Overland Park O Scale**  
*Kansas City Module "O"*  
 Contact: Jack Ferris, 10334 Ash Street, Overland Park, KS 66207  
 eMail: [fhs1955@GMail.com](mailto:fhs1955@GMail.com)
- KS, Olathe**  
*Weekend N-gineers*  
 16624 W. 126<sup>th</sup> St., Olathe, 1:00PM. Information: Ken Clark, [haphheart@swbell.net](mailto:haphheart@swbell.net)
- KS, Overland Park HO Scale**  
*Kansas City Society of Model Engineers*  
 Contact: John Teeple, President, 9539 Perry Lane, Overland Park, KS, 66212; (913) 492-4142  
 email: [jsTeep@aol.com](mailto:jsTeep@aol.com)
- KS, Topeka N Scale**  
*Topeka N-Track Associates*  
 At member's home, 7:00PM. Information: Bob Wright, 785-273-7835
- KS, Topeka F/G scale**  
*Northeast Kansas Garden Railway Society (NEKAN-GRS)*  
 1308 SW Caldton Street, Topeka, KS, 66611
- KS, Wichita HO Scale**  
*Wichita Model Railroad Club*  
 PO Box #48082, Wichita, KS, 67201  
 eMail: [WCMR1@cs.com](mailto:WCMR1@cs.com)
- KS, Wichita N Scale**  
*Kansas Area N-Trak*  
 2046 South Elizabeth Street Apartment #1306, Wichita, KS, 67213
- KS, Wichita**  
*Wichita Toy Train Club*  
 130 S Laura, Wichita
- KS, Wichita**  
*Wichita Area Garden Railway Society*  
 At member's home, Information: Nancy Marin, [nanmarin@att.net](mailto:nanmarin@att.net)
- KS, Wichita All Scales**  
*Wichita Area Model RailRoaders (WAMRR)*  
 4323 West Maple Street Wichita, KS, 67206  
 Contact: Lionel A. Smith, Jr., (316) 239-1174 or (816) 518-9050; eMail: [LionelSmith@hotmail.com](mailto:LionelSmith@hotmail.com)  
 Meets 2nd Thursday each month 11:30AM Spears Restaurant
- MO, Columbia HO Scale**  
*Columbia Area Model Railroaders (100% NMRA)*
- Missouri United Methodist Church, 204 S Ninth St, or member's homes. Thursday Evenings at 6:30PM.  
 Facebook: Columbia Area Model Railroaders; Contact: Marty Oetting, [martyoetting@gmail.com](mailto:martyoetting@gmail.com)
- MO, Jefferson City All Scales**  
*Capital City Model Railroaders*  
 PO Box #243, Jefferson City, MO, 65102-0243  
 Email: [pollocka@mchsi.com](mailto:pollocka@mchsi.com)
- MO, Kirkwood HO Scale**  
*Kirkwood Railroad Association*  
 Meets every Thursday 7:00 - 9:00PM  
 Contact: Rich Velten, 100 North Sappington Road, Kirkwood, MO, 63122  
 Email: [rmVelten@swbell.net](mailto:rmVelten@swbell.net)
- MO, Kansas City 16" Gauge Park Train**  
*Kansas City Northern Miniature Railroad*  
 NM 60th Street & Waukonis Drive, Kansas City, MO  
 Contact: W. Ohrnell (816) 746-5663  
 Information: [www.KCNRR.com](http://www.KCNRR.com)  
 Meets 1st Wednesday each month at 7:00pm
- MO, Kansas City HO Scale**  
*Greater Kansas City Model Railroad Club*  
 Contact: Walter L. Ohrnell, 6060 NW Waukomis Drive, Kansas City, MO, 64153  
 eMail: [wOhrnell@kc.rr.com](mailto:wOhrnell@kc.rr.com)
- MO, Kansas City HO Scale**  
*Southern Kansas City Model Railroad Historical Society*  
 8600 Ward Parkway Suite 2030 Kansas City, MO, 64114  
 Contact: Richard Boone Telephone: (816) 996-1534  
 eMail: [rBoone@traintown-kc.com](mailto:rBoone@traintown-kc.com)  
 Meets 2nd Monday each month 7PM Open house Sat. & Sun. 12 to 5PM
- MO, Kansas City N Scale**  
*Weekend En-gineers*  
 8600 Ward Parkway, Kansas City, MO, 64114  
 Contact: Richard Boone: (816) 966-1534  
 eMail: [rBoone@traintown-kc.com](mailto:rBoone@traintown-kc.com)  
 Meets 3rd Sunday at 11:30AM
- MO, Kansas City**  
*Kansas City Narrow Gaugers*  
 Members Homes, Information: Dean Windsor, [On3@worldnet.att.net](mailto:On3@worldnet.att.net)
- MO, Kansas City Standard, G, O, S, HO Marklin, HO, N, Z Scales and Wooden Trains**  
*Union Station Kansas City Model Railroad Society*  
 30 West Pershing Road, Kansas City, MO, 64101  
 Contact: Ted Tschirhart, Telephone: (816) 816-3449  
 eMail: [TedTschi@kc.rr.com](mailto:TedTschi@kc.rr.com)
- MO, Liberty**  
*Heartland N-Trak Of Greater Kansas City*  
 131 S. Water St., Liberty, MO, 1:00. Information: Bob Osborn, 816-452-9227  
[www.lawrencemodelrailroadclub.org](http://www.lawrencemodelrailroadclub.org)
- MO, Mexico HO Scale**  
*Mexico Train Works Model Railroad Club*  
 415-B W Jackson Street, Mexico, MO, 65265,  
 eMail: [info@mexicotrains.com](mailto:info@mexicotrains.com),  
 Website: [www.mexicotrains.com](http://www.mexicotrains.com),

Facebook: <https://www.facebook.com/groups/754983012043978/>  
Contact: John Johnson, 573-473-4928 or [rphjohn@hotmail.com](mailto:rphjohn@hotmail.com)

**MO, North Kansas City N Scale**

Missouri Northern Railroad Society, Inc.  
PO Box #12591  
North Kansas City, MO, 64116

**MO, Odessa HO Scale**

Eastern Jackson County Mainliners Model Railroad Club  
"Outlet Mall", Odessa, MO, 64076  
Information:  
[www.EasternJacksonCountyMainlines.com](http://www.EasternJacksonCountyMainlines.com)

**MO, Saint Louis N Scale**

Mississippi Valley N Scalers  
1684 Harbor Mill Dr., Fenton, MO, 63026  
eMail: [mvns@railfan.net](mailto:mvns@railfan.net)  
Website: <http://mvns.railfan.net>  
Facebook: <https://www.facebook.com/mvnsrr>  
Featuring NTRAK and T-TRAK modular layouts

displayed at regional shows.

**MO, Saint Peters HO<sub>n3</sub> Scale**

Modular HO Narrow Gauge Society  
914 Summer Leaf Drive, Saint Peters, MO, 63376

**MO, Savannah G, O, HO Scales**

Green Valley Baptist Model Railroad Club  
11993 County Road 162, Savannah, MO, 64485  
Contact: Nancy Adams (816) 262-0304  
eMail: [GreenPetticoat@yahoo.com](mailto:GreenPetticoat@yahoo.com)

**MO, Springfield HO Scale**

Ozark Model Railroad Association  
424 West Commercial Street, Springfield, MO, 65803,  
Info: <http://www.omraspringfield.org/contact.html>

**MO, Webster Groves 2-Rail O Scale (1/4" to the foot)**

Big Bend Railroad Club, Inc.  
8833 Big Bend Blvd., Webster Groves, MO, 63119  
Email: [secretary@BigBendRRclub.org](mailto:secretary@BigBendRRclub.org)  
Information: [www.bigbendrrclub.org](http://www.bigbendrrclub.org)

**NE, Freemont All Scales**

Nebraska Railroad Museum



## Region Resources

### Online Division Libraries in the Region



### Waiting at the Station

Our NMRA Divisions offer numerous articles and clinic presentations in their online libraries. Check out their offerings here:

**Gateway Division**

<http://www.gatewaynmra.org/model-railroad-article-library/>

**Turkey Creek Division**

<http://www.tc-nmra.org/TC-Library.html>

**Indian Nations Division**

<http://www.tulsanmra.org> and click on "Resources"



Amtrak's National Limited on the Missouri Pacific at Jefferson City, Mo. In the late 1970s.