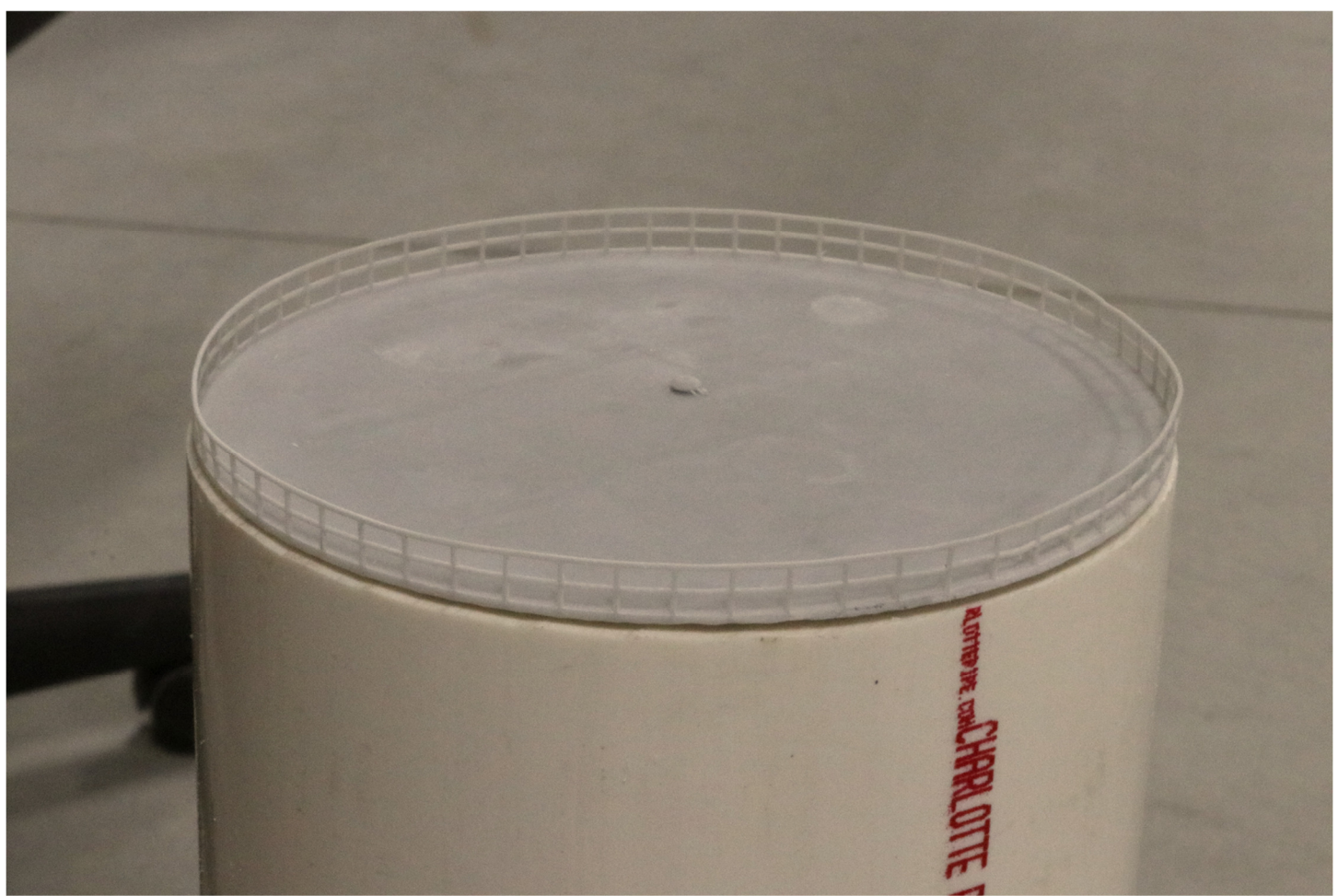


The Main Line



The monthly publication of the
Western Kansas Division
November 2024

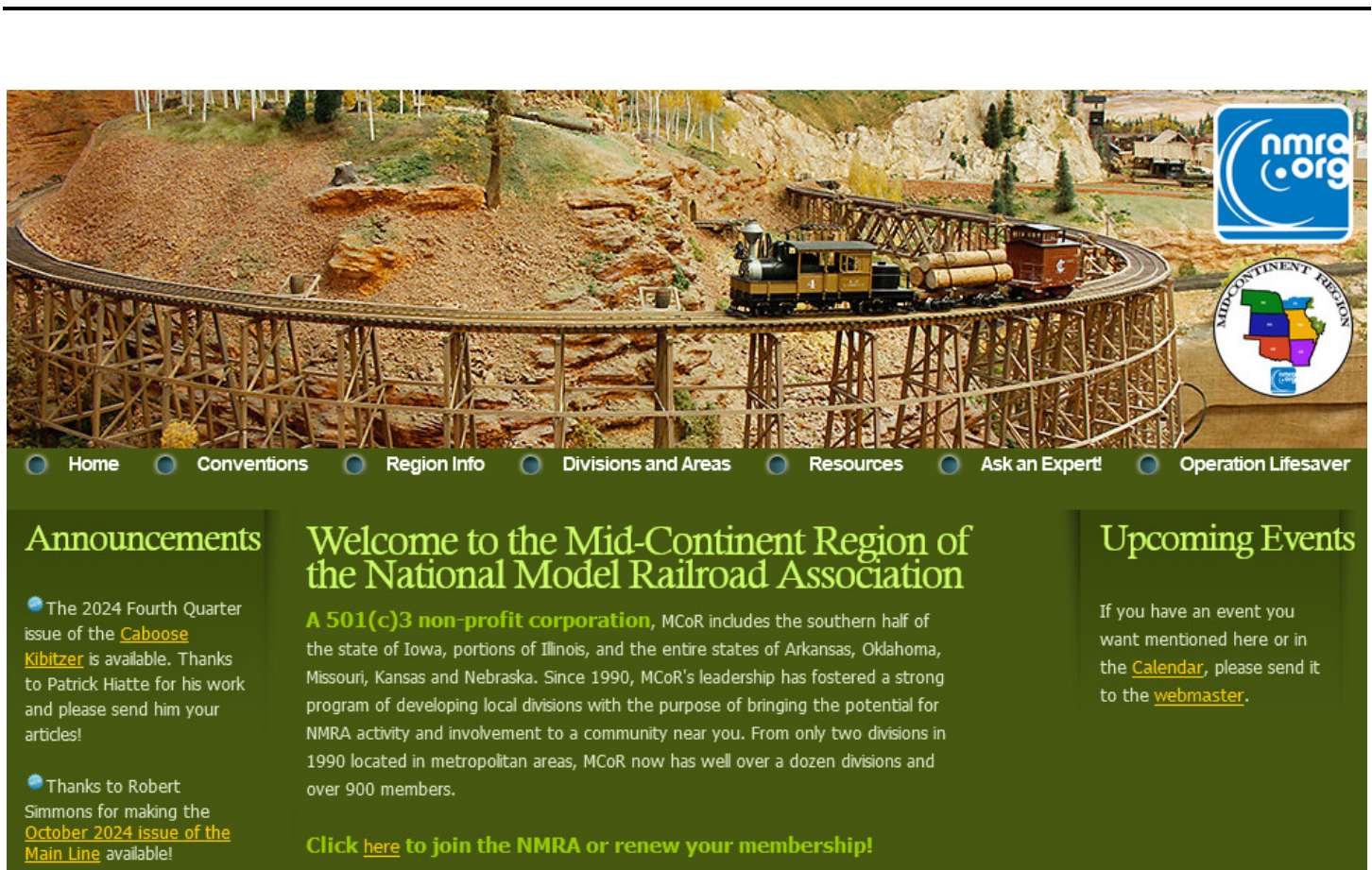


On The Cover:

It has begun... We decided to up-grade the scenery on section 4, the Agridyne plant. We just received the 3-D printed detail parts, so now we begin **Phase I**, the construction of the more detailed, replacement holding tanks. More inside...

In This Issue:

Rear View	Page 6
Oddballs	Page 17
WKR Update	Page 23
Date Book	Page 35



Home Conventions Region Info Divisions and Areas Resources Ask an Expert! Operation Lifesaver

Announcements

- The 2024 Fourth Quarter issue of the [Caboose Kibitzer](#) is available. Thanks to Patrick Hiatte for his work and please send him your articles!
- Thanks to Robert Simmons for making the [October 2024 issue of the Main Line](#) available!

Welcome to the Mid-Continent Region of the National Model Railroad Association

A 501(c)3 non-profit corporation, MCoR includes the southern half of the state of Iowa, portions of Illinois, and the entire states of Arkansas, Oklahoma, Missouri, Kansas and Nebraska. Since 1990, MCoR's leadership has fostered a strong program of developing local divisions with the purpose of bringing the potential for NMRA activity and involvement to a community near you. From only two divisions in 1990 located in metropolitan areas, MCoR now has well over a dozen divisions and over 900 members.

[Click here to join the NMRA or renew your membership!](#)

Upcoming Events

If you have an event you want mentioned here or in the [Calendar](#), please send it to the [webmaster](#).

Follow the action of the Mid-Continent Region including Conventions, Information on Divisions and Areas, MCoR Resources, Meeting information, and a lot more on their website:

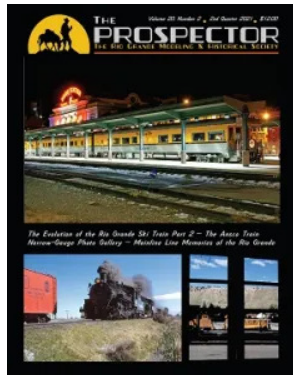
<http://mcor-nmra.org/>

Rio Grande

Modeling & Historical Society

The mission of the **Rio Grande Modeling & Historical Society** is to preserve and disseminate historical information about the Denver & Rio Grande Western Railroad for the benefit of our members and to others by locating, gathering, preserving, interpreting tangible items relating to the D&RGW and distributing information, documents, publications thus promoting fellowship and education among persons with interests in the railroad.

The RGM&HS publish *The Prospector*, our professionally produced and beautifully illustrated quarterly magazine featuring the finest work of historians and other experts on all aspects of Rio Grande Railroad.



Join or **renew** a Memberships in the RGM&HS which provides wonderful benefits and supports our goal to preserve the rich history of the Denver & Rio Grande Western. Explore the benefits of our varied membership levels in the Society, please **click the link below**.



<https://rgmhs.org/>

WELCOME TO **NRail**TM

[FORUM](#) [ACTIVITIES ▶](#) [PUBLICATIONS](#) [CLUBS](#) [FREE-MON](#) [NTRAK ▶](#) [T-TRAK ▶](#) [STORE](#) [ZOOMTRAK](#) [INFOLINKS](#)

The purpose of **NRail** is to promote N Scale model railroading in all forms, all standards wherever N Scale is present. NRail has been the voice of N Scale model railroading for over 45 years. Starting as NTRAK, it created the first national modular standard, provided the vehicle for N Scale to grow to the second most popular scale in North America, was the birthplace of T-TRAK and today is the home of N Scale model railroading.

We welcome all N scalers.



What are NTRAK Modules?

NTRAK Modules are tables that "C" clamp together to form large N scale train layouts at conventions, shopping malls, club rooms, and as home layouts. The basic module is two feet wide, four feet long, and 40" high. There are adjustment bolts in the legs with a two-inch adjustment range. The three tracks are common to all modules and the same electrical connectors are used on all modules. This makes setting up layouts a quick job. There are optional sizes and track locations to give a great deal of flexibility to the system.

Click here for the N-Rail website: <https://nrail.org/>

For the N-Rail Facebook page, click this link: <https://www.facebook.com/NRail.org>

Railroad Model Craftsman November 2024

Lehigh Valley's Final Chapter in N • by *RON PAPIERCAVICH* — A beautiful proto-freelanced take on the Route of the Black Diamond in N scale.

Pullman-Standard 60' Paper Service Cars: 7452 • by *JAMES KINKAID* — New designs for 60' boxcar developed by Pullman-Standard in the 1960s.

Build Wabasso Garment Textile Mill in HO • by *JACK HUGHES* — Kitbash a large New England textile mill complex using Walthers Cornerstone kits.

Operations on the C&O Ryder Gap Sub • by *JOE GREEN* — Adopting prototype Chesapeake & Ohio practices for fun and engaging operating sessions.

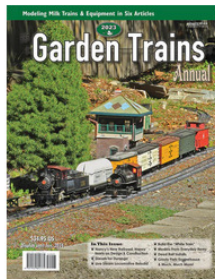
Ideas for Future-Proof Layout Design • by *ROBERT A. CHANT* — Ideas on how to design and build a layout that grows with your hobby interests.



Check out the Book Store:



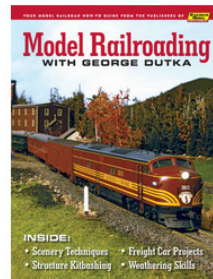
On30 Annual 2023
\$34.95



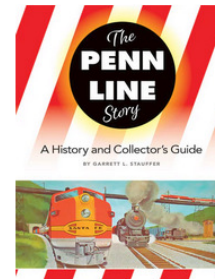
Garden Trains Annual 2023
\$34.95



Scenic & Weathering Techniques
\$34.95



Model Railroading with George Dutka
\$34.95



The Penn Line Story: A History and Collector's Guide



HO3 Annual 2022
\$29.95



Click here to start reading today: <https://whiteriverproductions.com/>



This morning I saw this lady talking to her cat... Poor woman thought the cat understood her...

I got home later, told my dog, and we laughed about it.

The Rear View

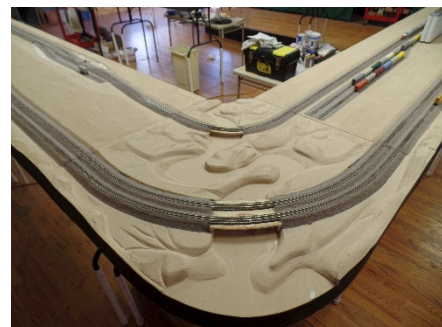


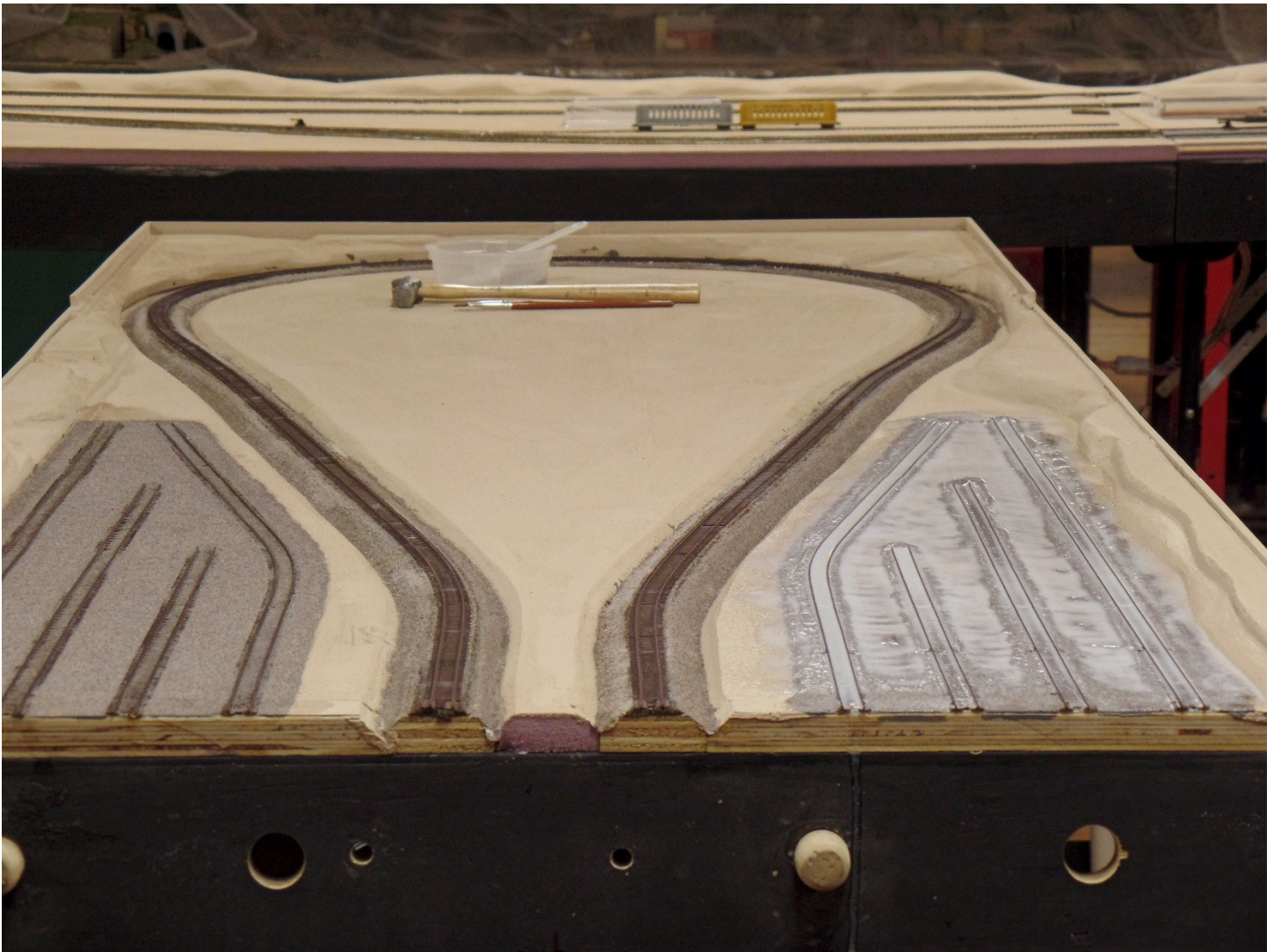
2024 marks the **10-year** anniversary of the construction of the **Western Kansas Rails** N-scale layout, so we will be looking in the rear-view mirror to see the changes. We will continue from July 2015.



(Above) The ballast work continues on the WKR, this is section 10 with a test train after the glue has dried. Once the ballast glue has dried, now is the time to go around the tracks and make sure no ballast has been glued to the inside rails.

(Right) Both bridges are complete, and ballasting is completed on corner section 6.

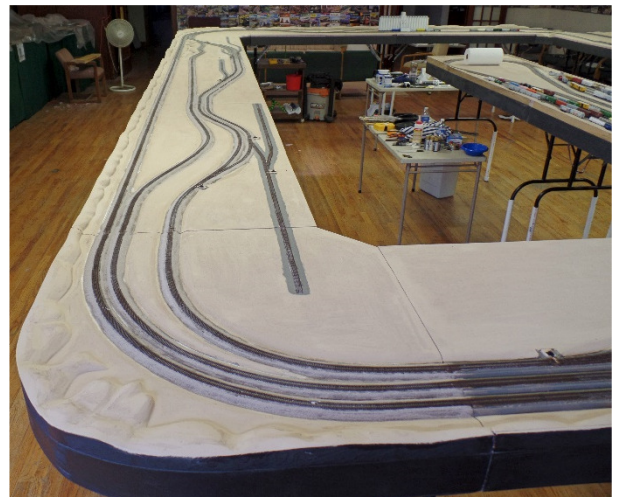




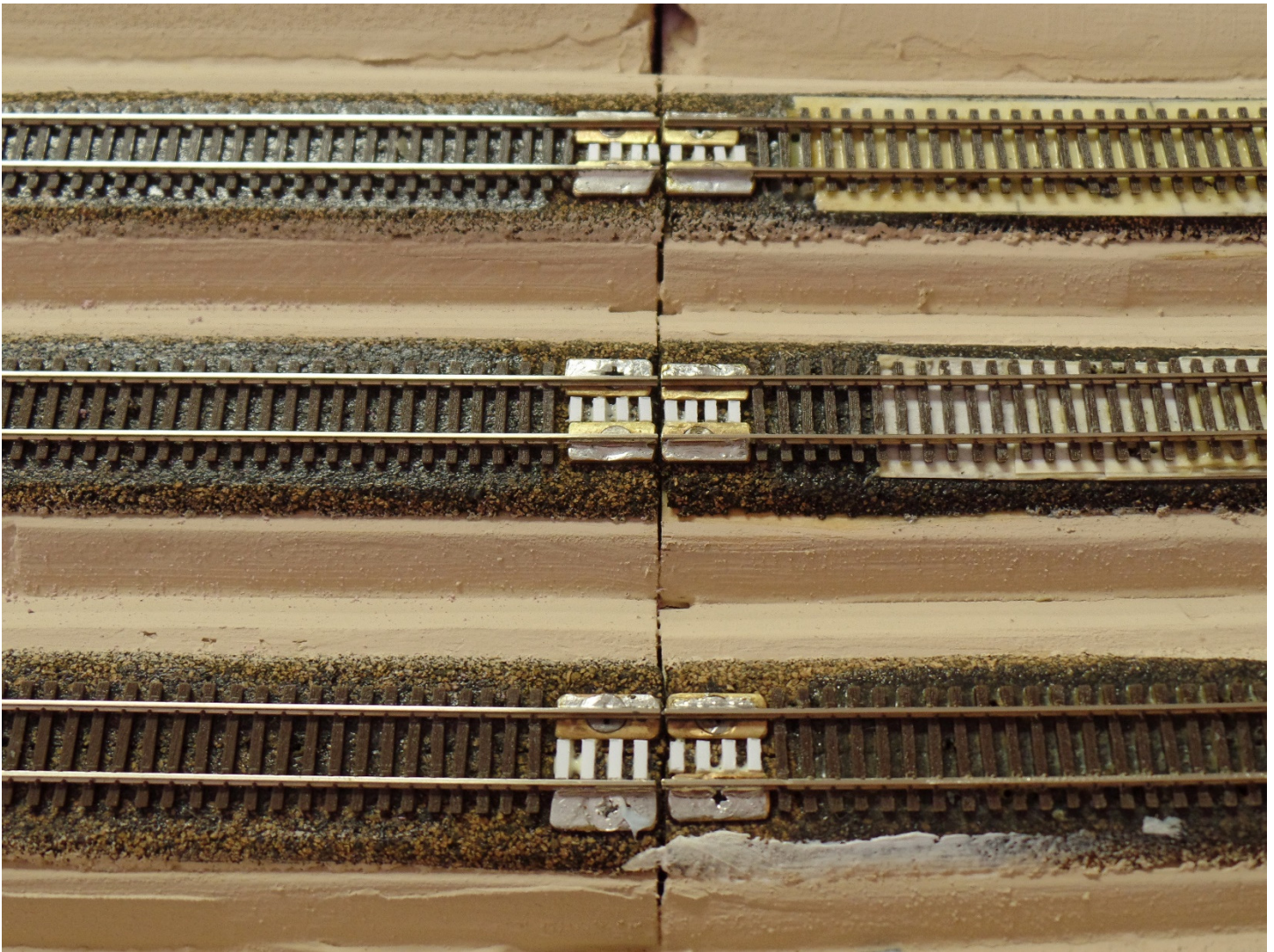
(Above) A good view of section 16, the end of the yard sections. The main line (in the center) and the yard tracks on the left have dried, while the right-side yard tracks have just been ballasted.



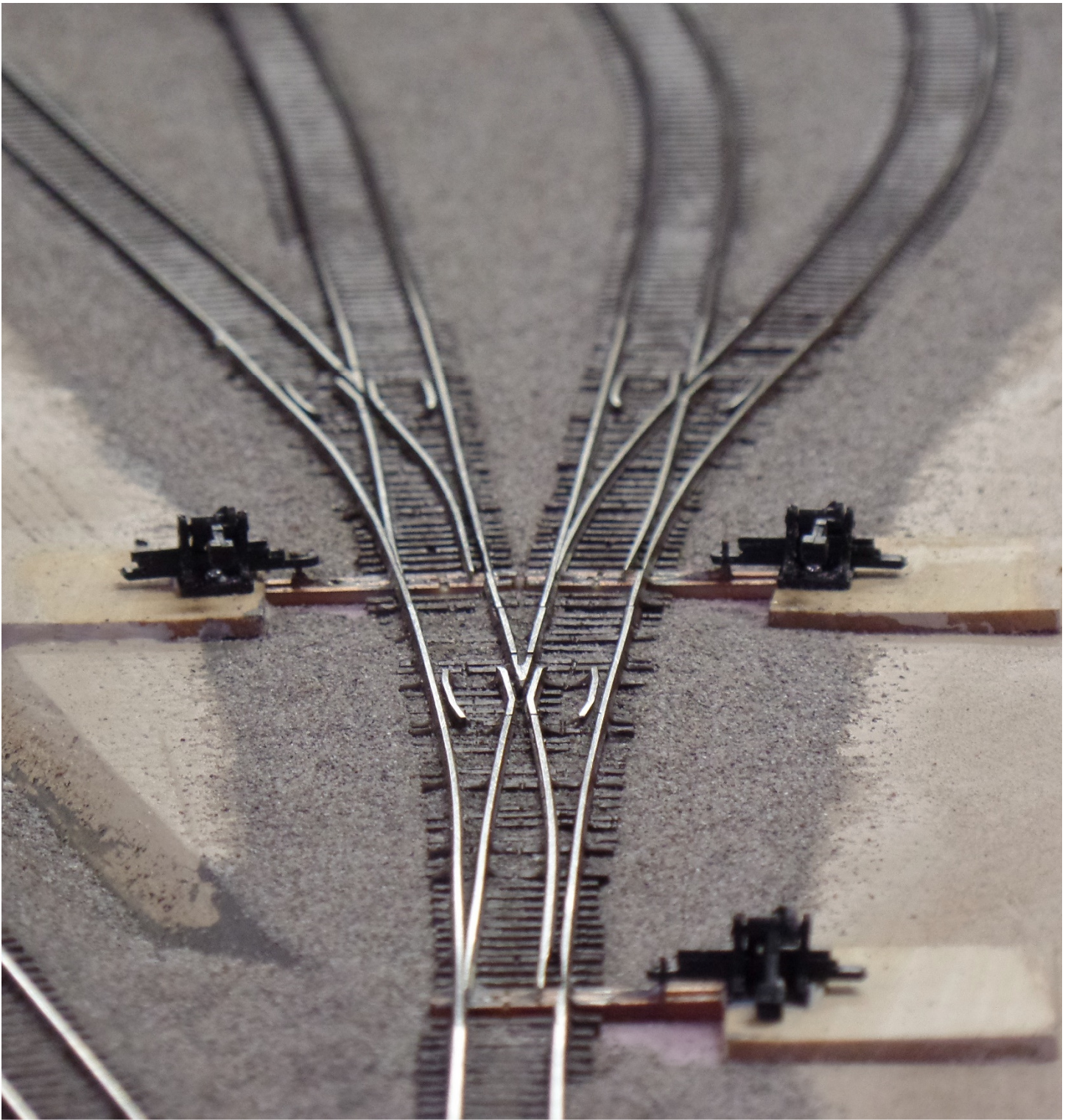
(Left) the three tracks on corner section 9 have been ballasted.



(Right) The entire left side, sections 9,10,11, 12, & 13 have been ballasted.



(Above) A close look at the method of crossing sections without extra track pieces. The original method of junctions from the *“Sippin’ & Switchin’ Society of North Carolina”* in HO scale was to use two, brass, countersunk flathead screws under each rail at the tips (four total) to which the rails were soldered. We decided to make a variation of this for N-scale, by using K & S ¼-inch wide brass strip. These were marked into ½-inch lengths, with a hole drilled and countersunk in the middle. The strip was then cut into the ½-inch sections (it’s easier to drill and countersink as one unit). We elected to use 1-1/4-inch steel screws for strength. Note on the upper two tracks to the right, the cork roadbed had been sanded a bit too much which developed dips. These were corrected using strips of posterboard glued with wood glue until the straight edge said they were level. About four ties were removed from the track ends and were tacks into position. The placement of the brass strips were marked and then the holes were begun with a drill and finished with the screw. At this point vertical adjustment is needed. With the track loose, you need to use the screwdriver to adjust up or down until the brass strip just kisses the underside of the track rail, so the rails are level. Apply the wood glue to where the track will go, lay the track in place and hold with map pins, then solder the brass strip, steel screws, and rail together. Once the track glue has dried, you can replace the ties you removed. We discovered it was easier to cut strips of sheet styrene to replace removed ties, so they were cut to proper length to fit in between the brass strips and glued in place. Once the track is painted and ballasted, it will be very hard to detect.



(Above) a close look at one of the yard throats on section 15 featuring a wye plus left and right number 8 switches. Of course you need to be careful ballasting around the throwbar area.

(Right) After all ballasting is complete near the end of September, we spent some time running trains to find any problems before scenery application.





(Above) The next phase begins, planning out the scenery.

(Below) Planning out the scenery on section 12 and corner section 13 and we are now up to January 2016. More on scenery design next month...





Lots of new arrivals headed this way! We have added many items to our special value list to help make room, get them while you still can!

HO Scale

HO Scale Locomotives

HO Scale Rolling Stock



HO Scale - Special Values

- Locomotives
- Rolling Stock
- and more

N Scale

N Scale Locomotives

N Scale Rolling Stock



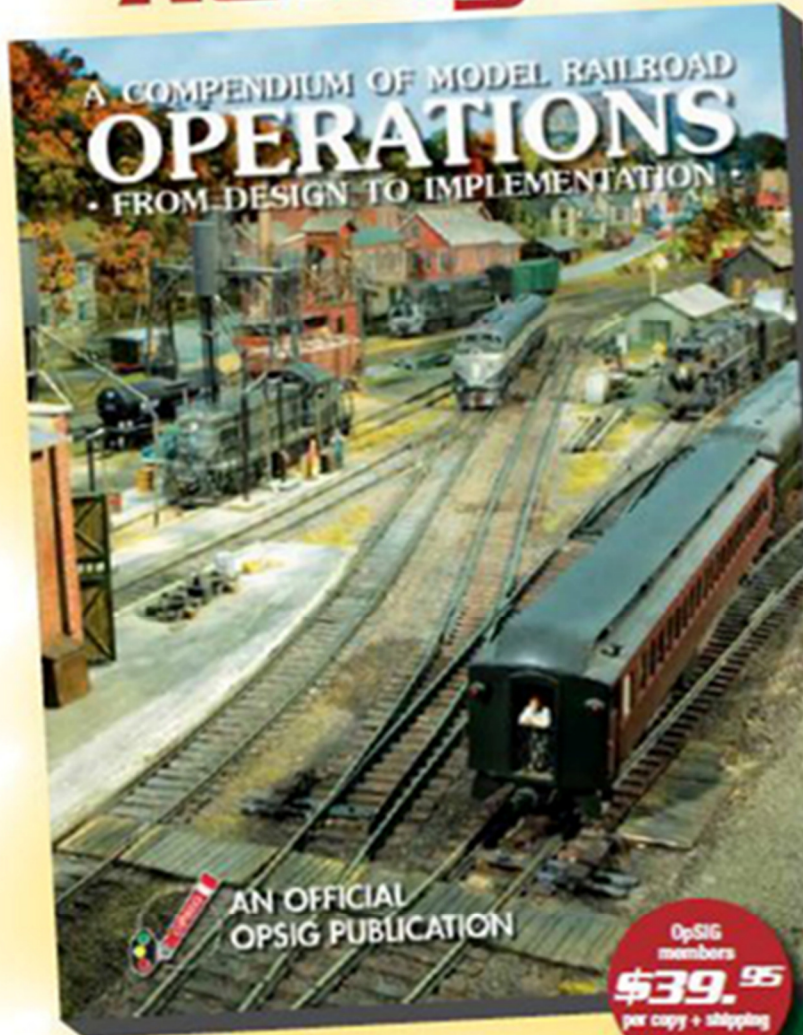
N Scale - Special Value

- Locomotives
- Rolling Stock
- and More

Click here to start shopping: <https://midwestmodelrr.com>

For the MMR Facebook page, click here: <https://www.facebook.com/MidwestmodelRailroad>

Dispatcher to OpSIG Publication No. 2, you're ...
Ready to Roll!



All model railroaders, whether expert or beginner, will find a wealth of useful information in the OpSIG's second publication, **A Compendium of Model Railroad Operations - From Design to Implementation**. A complete guide to all things operations, our latest offering covers every aspect of prototype operations and how to apply them to your model railroad—from design and staffing to yards and paperwork, from communications and signals to dispatching and car forwarding—in 310 full-color pages. Written by ten of your fellow modelers and professionals, **The Compendium** contains more than 350 photos, 120 illustrations, and countless tips, pointers, suggestions, and prototype information to help guide you on your journey. A must for any modeler interested in prototype operations, add it to your library today!

OpSIG members
\$39.95
per copy + shipping

Non-Members
\$49.95
per copy + shipping

Shipping: US (\$8)
Canada/Mexico (\$21)
Overseas (\$28)

For shipping rates on multiple books, as well as better international shipping, please contact Steve Benezra.

To Order: Please mail a check or money order, payable to OpSIG, with number of copies and your mailing address, phone number, and e-mail to:

Steve Benezra
2737 Thistle Trail
Hillsborough, NC 27278-9302
Opsig.editor@gmail.com

For Paypal orders, please add \$1 to the cost of the book and send to OPERSIG@yahoo.com. Provide your mailing address and telephone number in the subject box.

The OpSIG is a 501(c)3 non-profit corporation. For information on how to join the OpSIG, please visit www.opsig.org.



Robert Simmons

@robertsimmons6464 · 1.03K subscribers · 407 videos

This channel is about Model Railroading in general, and specifically the antics of the West ...more

Customize channel

Manage videos

Follow the activities of the **Western Kansas Division, NMRA** on the Robert Simmons YouTube channel



Scale Trains EMD SD40T-2 on the WKR Layout

<https://www.youtube.com/watch?v=FlmJOMkgjG8>

<https://www.youtube.com/watch?v=CsHFVu3b-Hk>



Switching on the WKR N-scale Layout - 5731 East - ...

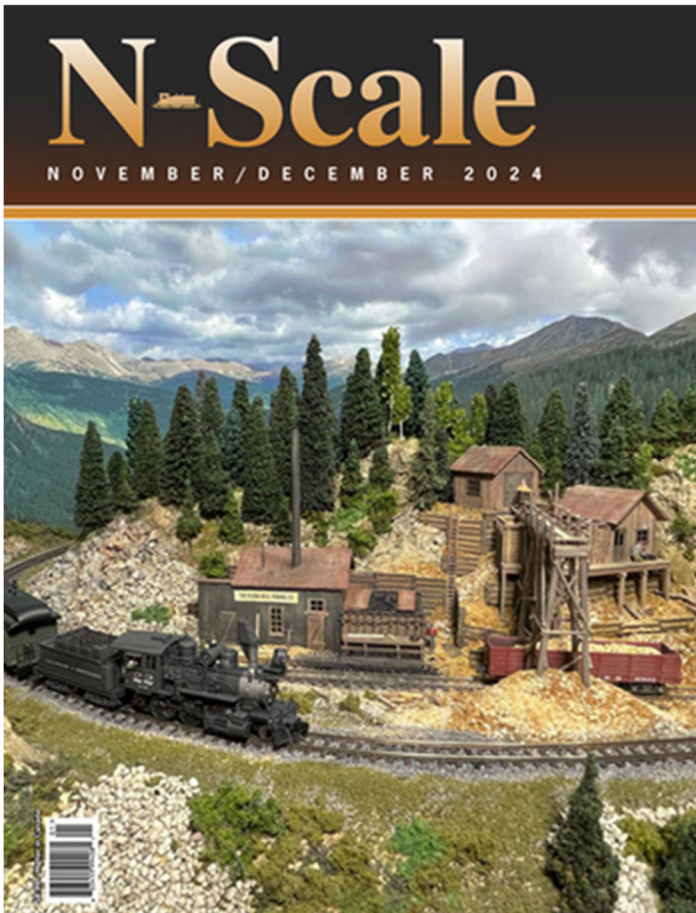


Switching on the WKR N-scale Layout - 9647 West - ...

<https://www.youtube.com/watch?v=uu2riG2CpSA>

Check it out here: https://www.youtube.com/channel/UC9EPv8cQ04rRGAYts-734jw?view_as=subscriber

N-Scale



IN THE CURRENT ISSUE

Modeling Colorado's Flora Bell Mine
in N scale
by Preston Sands

Making an N Scale Shadow Box
Article by Dave Pomarenski, Photos by Dave Pomarenski and Irene Shaw

Revisiting Queens, NYC
in N scale
by Karl Heidenreich

In Pursuit of WOW
Part 23 – Creating Sidewalk and Driveway
Castings for our Water Street Diorama and any
future layouts.
by Dennis Machlica

My Layout, My World
Construction by Aaron Butler, Text written by
Adam Skelton

The Short & Nn3arrow
Model Railroading "Off The Grid"
by Thomas Knapp, MMR #101

N-Scale is a bi-monthly magazine devoted exclusively to N scale modeling, detailing, electronics, N'Spiration photos, layouts, scenery, photography, scratchbuilding, painting and weathering, operating dioramas and more.

25 Years of N-Scale Magazine on CD

N-Scale Magazine is now available on CD.
Order yours today!



Click here to start reading today: <https://www.nscalemagazine.com/>



The **Friends of the Burlington Northern Railroad (FOBNR)** historical society was chartered to gather, preserve, and share information about the history and the current operations of the Burlington Northern Railroad. The group began with about 140 members absorbed from the Burlington Northern Historical Society, interested in studying the history of the Burlington Northern Railroad. In 1996, following the merger between Burlington Northern and Santa Fe, the group voted to follow the Burlington Northern from 1970 to 1995 and the BNSF from 1995 to the present. Then in 2018 we added coverage of the Montana Rail Link.



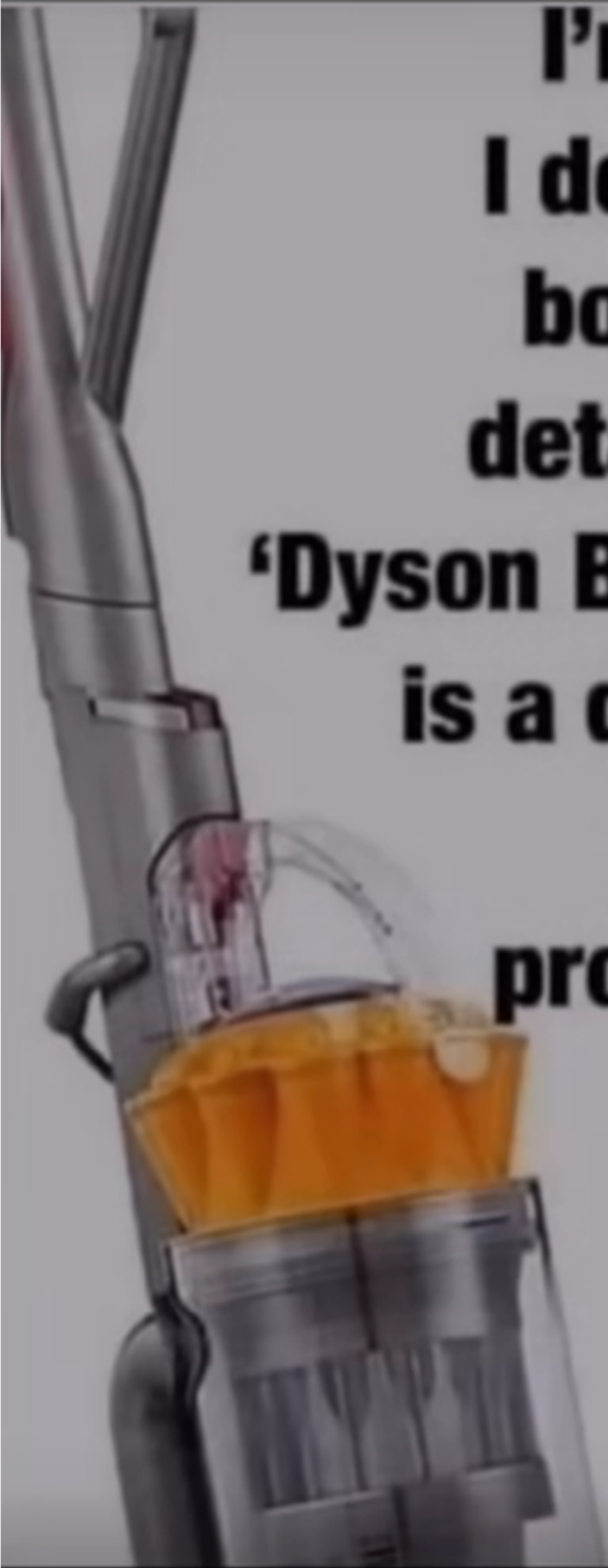
The Group's quarterly publication, *The BN Expediter*, is the voice of the organization that shares news about the group's activities, BN historical data, and current operations of the railroad. It is currently a 30+ page all-color publication and will grow even larger as the society grows and more members contribute more information.



- Membership is for one full year.
- Multiple year memberships are permitted and even encouraged, but not for more than 3 years.
- All members get 4 issues of *The BN Expediter*, our quarterly magazine.

Click here for the FOBNR website: <https://fobnr.org/>

For the FOBNR Facebook page, click here: <https://www.facebook.com/@fobnr>



**I'm in the ER.
I don't want to
bore you with
details, but the
'Dyson Ball Cleaner'
is a dangerously
misleading
product name.**



Oddballs

Every so often an idea or product just doesn't catch on and is not mass produced.

Baldwin DR-12-8-1500/2



From Wikipedia, the free encyclopedia:

The **Baldwin DR-12-8-1500/2** (known informally as the *Centipede*) was the Baldwin Locomotive Works' first serious attempt at a production road diesel locomotive. The Baldwin type designation was '*DR-12-8-1500/2*,' meaning **Diesel Road** locomotive, with **12** axles (**8** of which were driven), and **two** engines of **1,500 horsepower** each. The trucks were configured in a 2-D+D-2 wheel arrangement.

Built between December 1945 and July 1948, the "Babyface" design reflected Baldwin steam and electric locomotive practice. The carbody rode on two massive articulated cast steel half-frames cast by General Steel Castings, linked at the middle with a hinged joint. Unpowered four-wheel trucks at each end guided the locomotive through curves for stability at speed. Internal wiring was passed through metal conduits exactly like those used on a steam locomotive, which proved troublesome in practice.

The prototype 2-unit set was built in 1945 and toured American railroads. Orders followed from the Pennsylvania Railroad, the Seaboard Air Line Railroad, and the National Railways of Mexico (NdeM). The two demonstrators (originally ordered by Union Pacific Railroad as #998 and #999) were never sold and were eventually scrapped. The "Centipedes" were essentially obsolete during production, unable to compete with the more advanced locomotive design and technology offered by EMD.

Reliability was an ongoing problem, and as they were built one at a time (like steam locomotives) each one was a bit different in the placement of wiring and equipment, which complicated even routine maintenance. The PRR units were eventually derated and relegated to helper service. Most PRR and SAL units were scrapped by the early 1960s, while NdeM units lasted slightly longer and were in service until the late 1960s.

Fifty-four in total were produced. No Centipedes have been preserved.



The latest in HO scale modular model railroading

Free-mo was developed with the idea that a set of standards focusing mainly on module endplates would enable faithful modeling of prototype track plans and operations in a modular environment. The length and track configuration of a Free-mo module or module set is up to the modeler. Free-mo takes the boredom out of running trains monotonously around a double or even a triple track mainline. With Free-mo, less is more. **Free-mo** operates like a permanent or sectional layout but still retains its modularity. Free-mo layouts are operated with a single track mainline in a point to loop, loop to loop, or point to point. Layout sizes can vary to any size conceivable.



Free-mo operates like a permanent or sectional layout but still retains its modularity. Free-mo layouts are operated with a single track mainline in a point to loop, loop to loop, or point to point. Layout sizes can vary to any size conceivable.

The Free-mo mainline is centered on a two-foot end so modules can be inverted 180 degrees and still mate up to the adjacent module without modification to wiring or track. The Free-mo mainline also takes advantage of stronger industry support of code 83 rail.



Find out more on the Free-mo website: <http://www.free-mo.org/>

Also, visit the Free-mo Facebook page: <https://www.facebook.com/groups/218290678222679>



October Running Extra:

MRH RUNNING EXTRA
Apprentice with savvy modelers

Michael Tondep builds an Arduino-powered weight scale
READ NOW!

SUBSCRIBE and save 80%!

Full October MRH inside!

ALSO in this month's edition:
- Jim Six: New Ballville Branch track plan
- Installing a roller derrick
- DIY 3D printing Using DesignSpark
- Make your own M1 lenses
...and much more inside!

ADAPTIVE EDITION INDEX TABLE OF CONTENTS

Subscribe and save BIG

Click here to start reading today: <https://model-railroad-hobbyist.com/>

For the Facebook page of MRH, click here: <https://www.facebook.com/mrhmag>

Access back issues page

All FREE!

... over 200 pages of FREE model railroading how-to information every issue!



Edit

Mid-Continent Region, NMRA

Public group · 789 members



+ Invite

Share



The Facebook page of the Mid-Continent Region is where you find out about the upcoming Train Shows, activities, layout updates, modeling techniques, tips and a lot more...

<https://www.facebook.com/groups/1851848998468077>



Western Kansas Division

1.6K likes · 1.6K followers



Liked

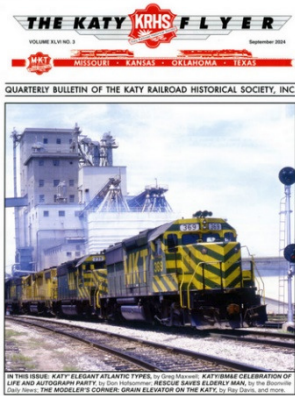
Message

Search

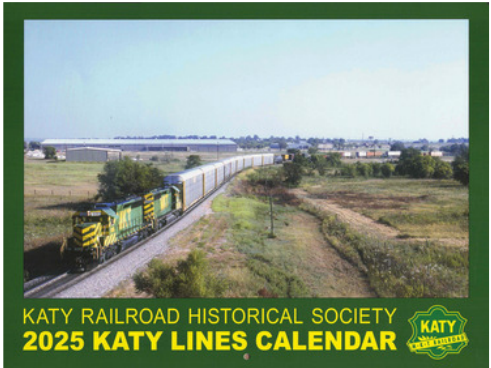
<https://www.facebook.com/profile.php?id=100064641403539>



The **Katy Railroad Historical Society**, a non-profit organization, was formed in Parsons, Kansas, on October 1, 1977, with a nucleus of 43 charter members. The purpose of the society is to bring together in close association those persons who have a common interest in the Missouri-Kansas-Texas Railroad, known to many as the Katy. To increase the enjoyment of their interest through appropriate activities. The encouragement of members to contribute to the collection, compilation and publication of interesting data pertaining to the Katy, including preservation of such information for future reference. The increase of knowledge of and fostering of goodwill towards the M-K-T Railroad among members and the public.



KRHS Katy Flyer Magazines and Calendars feature many rare and historic photographs of the Katy Railroad that are great for collecting and research.



Click here for the KRHS website: <https://katyrailroad.org/>

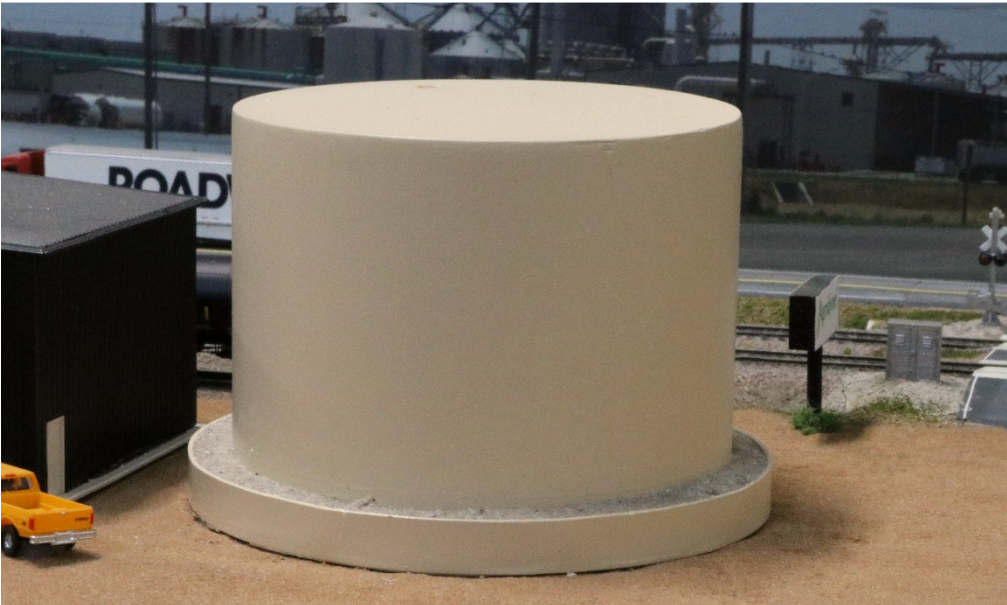
For the KRHS Facebook page, click here: <https://www.facebook.com/katyrailroad>



A lot of women complain that their husbands never listen to them...

I'm proud to say I've never heard my wife say that.

WKR Update



(Left) The object of the exercise, one of the three holding tanks from the Agridyne facility on section 4.

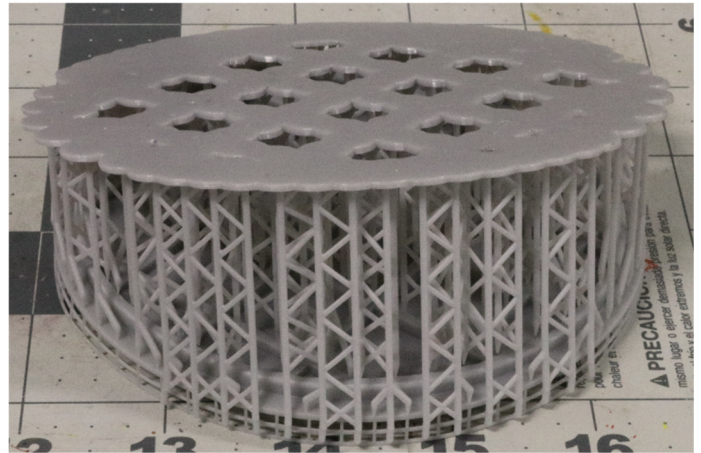
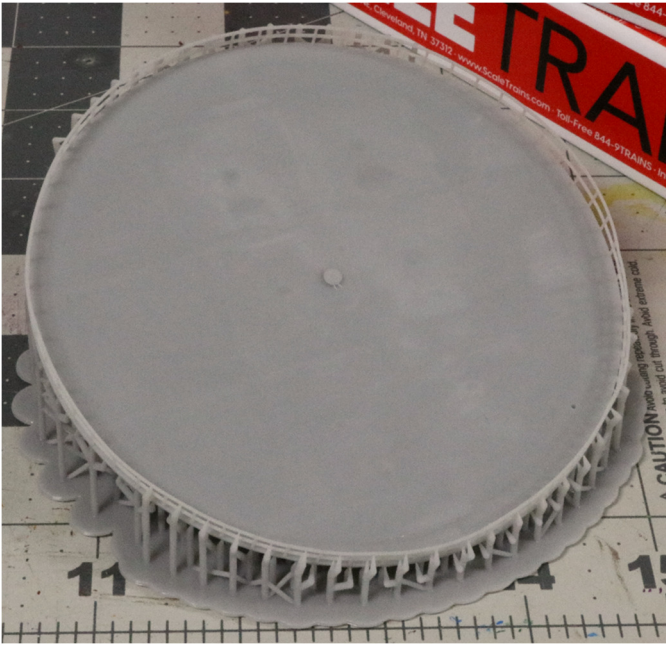
This was constructed from 3-inch PVC pipe and sheet styrene. The spill containment ring is prototypical to this plant and was made from sheet styrene. These tanks were made to be place holders for better ones in the future, well the future is here!

We had been a big supporter of “Shapeways”, a 3-D printing company as they offered many hard-to-find N-scale details. The bad news is earlier this year, “Shapeways” declared bankruptcy and ceased operation. Just by chance while scrolling through Facebook, I came across a post where another modeler was working on a 3-D printed kit by an individual who 3-D prints on his website: <https://nscaler454.com/>. We jumped on his website and were amazed at the number of N-scale printed detail parts many of which were for tank farms.



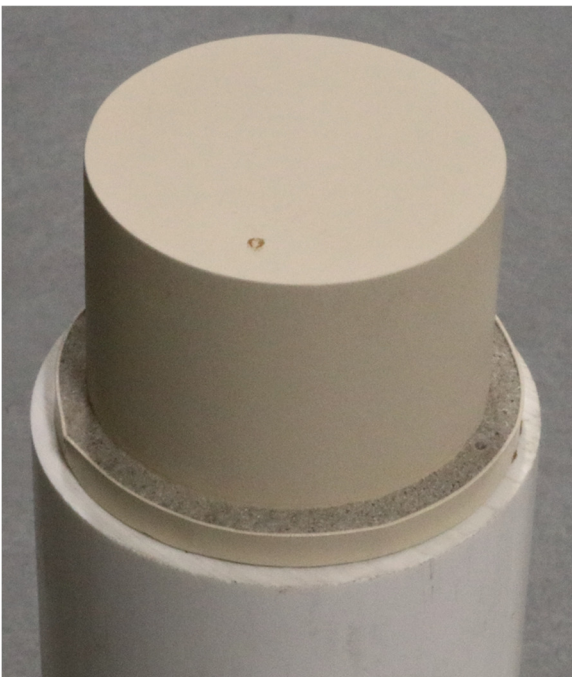
(Above) The home page for nscaler454.com.

WKR Update



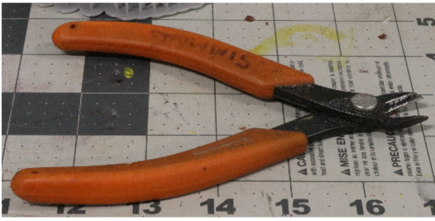
(Both Above) We ordered quite a few detail items from nscaler454, and we decided to get started with the three large storage tanks. Here we see top and bottom views showing the plentiful support structure underneath.

(Right) On a trip to Sutherlands (the best home supply store in Dodge City) we took a tape measure and came home with a short section of 4-inch OD PVC pipe which was specified in the instructions for the large tanks, plus a couple of different sizes of pipe for the smaller tanks.

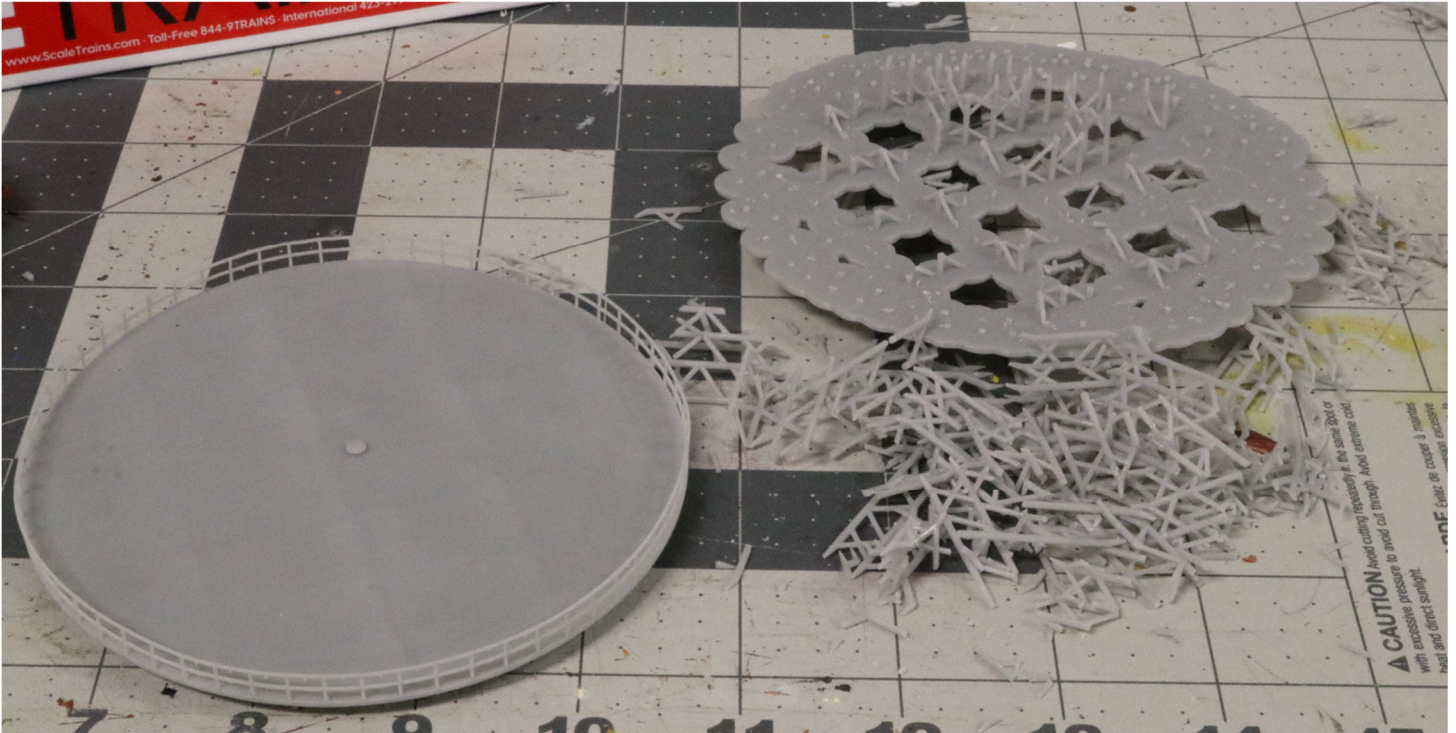


(Left) For comparison, the original 3-inch tank and containment ring is placed on top of the larger 4-inch PVC pipe.

WKR Update

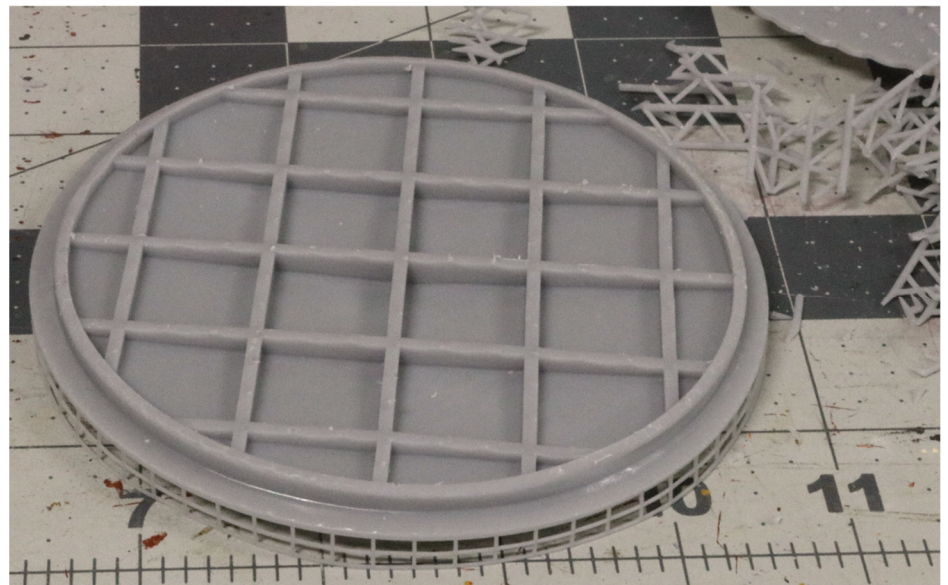


Step one is to use a pair of side cutters to begin removing the forest of support from the tank top. The supports cut easily, but because they are so numerous, it will take a while to remove them all. One thing he does is to thin out the support where it attaches to the finished product, so they do not hurt the detailing like the railing when removed.



(Right) The bottom of the tank lid after the supports have been removed. The tank top supports are substantial so there should be no warping of the lid in later years.

There is no doubt that with PVC pipe, there are differences in wall thickness depending on use. The pipe we purchased has much thicker walls with a smaller interior diameter than this kit. This required some modification of the underside supports.

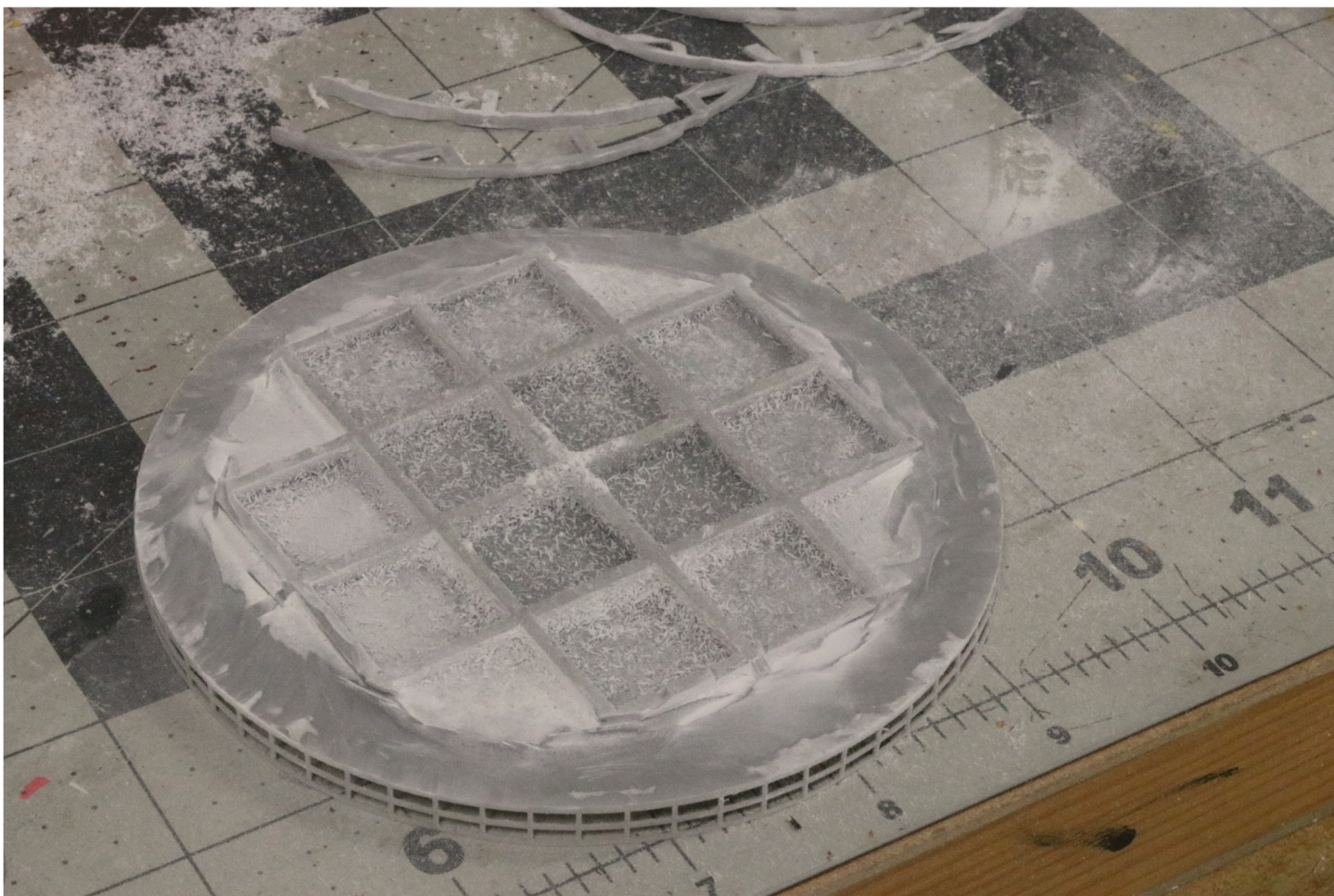


WKR Update



(left) Our first choice to make the modifications was a Dremel with side cutter bit. After some trials, we decided the standard cutoff disk was a better choice.

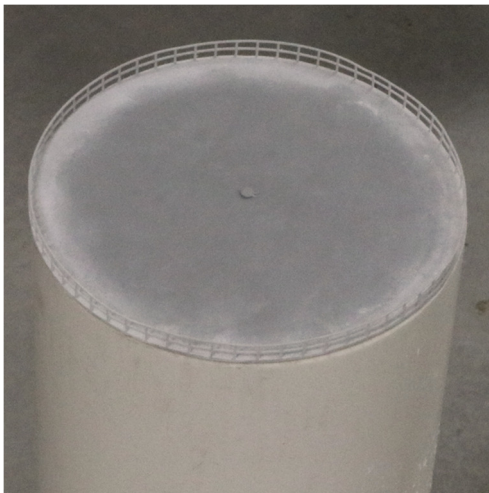
(Below) It's always better to learn from the mistakes of others. During the cutting, the 3-D material turns into a fine powder. 1. Wear a dust mask and eye protection as you don't wish to breathe this stuff in.



2. Do the job someplace else than your hobby work bench as the powder gets everywhere. Try outside, or on a surface that is easily vacuumed.

As you can see in the photo, we had to trim the underside supports to clear the interior diameter of our chosen PVC pipe.

WKR Update



(Left) Test fitting the tank top on the PVC pipe to make sure all of the under supports were moved back enough to clear the pipe walls. This is prior to clean-up.

(Below) The modified and cleaned tank top resting on the PVC pipe. The fit is close but not exact. We believe this is due to the PVC pipe rough cut as we have not trued the pipe surface on the sander yet.

So, the first thing for next month is true-up the pipe end on the belt sander, then we need to cut the pipe into three, three-inch tall pieces and finish by truing all ends. We also need to trim the other two tank tops to fit, then we can begin the assembly.





Welcome to Spring Creek Model Trains

On The Road...

The Next Show We Are Attending

Dave & Deb will be at the **Oklahoma City Train Show** in Oklahoma City Oklahoma at the [The Pavilion Oklahoma State Fairgrounds](#) on Saturday November 2nd from 9:00am to 5:00pm & Sunday November 3rd 10:00am to 4:00pm.

Jeff will be at the **Mid-Continent Prototype Modelers Meet** in Benton Kansas at the [Benton Lions Community Center](#) on Saturday November 2nd from 9:00am to 5:00pm & Sunday November 3rd 10:00am to 3:00pm.

New Exclusive Product...



Intermountain HO Scale Bi-Level Auto Rack Rock Island

Spring Creek Model Trains offers exclusive [Intermountain](#) Bi-Level auto rack Rock Island. This model comes in six different road numbers not available from Intermountain, and different from our previous run of this car. For more information and to order the exclusive car follow this link.

[Spring Creek Model Trains – Intermountain Bi-Level Auto Rack Rock Island](#)



Intermountain HO Scale Evans 100 Ton Coil Car Rock Island

Spring Creek Model Trains offers exclusive [Intermountain](#) Fox Valley Models bi-level auto rack in Rock Island livery. These models come in six different road numbers not available from Intermountain. For more information and to order the exclusive car follow this link.

[Spring Creek Model Trains – Intermountain Evans 100 Ton Coil Cars](#)

For the SCMT website, click here: <https://www.springcreekmodeltrains.com/>

On Facebook? Check out the SCMT page: <https://www.facebook.com/springcreekmodeltrains>



Welcome to the National Model Railroad Association

Achievement Program

The NMRA Achievement Program (AP) is a guide to help you on your journey through the world of model railroading. The AP provides incentive to learn and master the many crafts and skills necessary in the hobby of model railroading. With the mastery of each skill, you will be issued a certificate acknowledging your achievement. There are three groups of awards within the AP - the Golden Spike Award, the AP Certificates program, and the Master Model Railroader® Award. All awards earned in the Achievement Program are recognized in the NMRA Magazine.

Get Paid for Having Fun

Grouper for USA Members over 65

Modeling is a Health Benefit...

MODEL RAILROAD

Rail Pass

Would you like to test drive the NMRA? Now's your chance! With a Rail Pass membership, you'll have access to one of the world's largest railroad libraries, get reduced rates on special layout or collection insurance, receive 9 digital issues of the NMRA Magazine, and much more.

Click here for the NMRA website: <https://www.nmra.org/>

Check out the NMRA Facebook page: <https://www.facebook.com/groups/46322574676>



Great Model Railroads 2025 includes layouts both large and small. This popular special issue features ideas for whatever type of layout you want to build, and the inspiration to make it the best you can.

This year's issue features a highly detailed N scale logging railroad in only 4 square feet, along with a narrow-gauge S scale layout, plus model railroads in HO and O scale standard gauge.

Be inspired all year long with *Model Railroader's* all-new 2025 calendar! You'll get to enjoy 12 spectacular layouts encompassing a range of scales, locations, and railroads.

Bonus - You'll find inspiration all year long with these 12 scenic layouts, which were featured in *Model Railroader* and *Great Model Railroads*. Encompassing a range of scales, locations, and railroads, these layouts offer something for everyone.



Click here to get your copies: <https://shop.trains.com/>



**The longer we
are together. I'm
pretty positive
that my wife is
realizing that I'm
just about right
about
everything. she
just does not
want to admit it.**

The 47th Annual

OkTrain OC Show



Discover the Exhilarating World of Trains
at the Oklahoma City Train Show.

The Oklahoma City Train Show, one of the region's largest model train shows, features a variety of exciting attractions. From operating model train displays and clinics to vendors, exhibitors and manufacturers from over a dozen states, there is something for everyone. Don't miss your chance to browse railroad memorabilia, toy trains, scale model trains and other railway items.

For a truly interactive experience, check out the new
O gauge kids' area where you can take on the role of
an engineer and operate your own locomotive.

DOOR
PRIZES!

300
TABLES!

NOV
2-3
2024



Location

The Pavilion at the
Oklahoma State Fairgrounds
3212 Wichita Walk | Oklahoma City
Saturday 9 am-5 pm | Sunday 10 am-4 pm



Info

For questions, find us on the
web at okctrainshow.com
or call (405) 424-8222



Admission

Admission is \$14.00
Children 12 and under are FREE



— 4TH ANNUAL —

MODEL TRAIN CONVENTION & EXPO

— FUNDRAISER —

JANUARY 11-12, 2025

SATURDAY 9-5 | SUNDAY 10-3

McPherson Community Building
122 E Marlin St | McPherson, KS

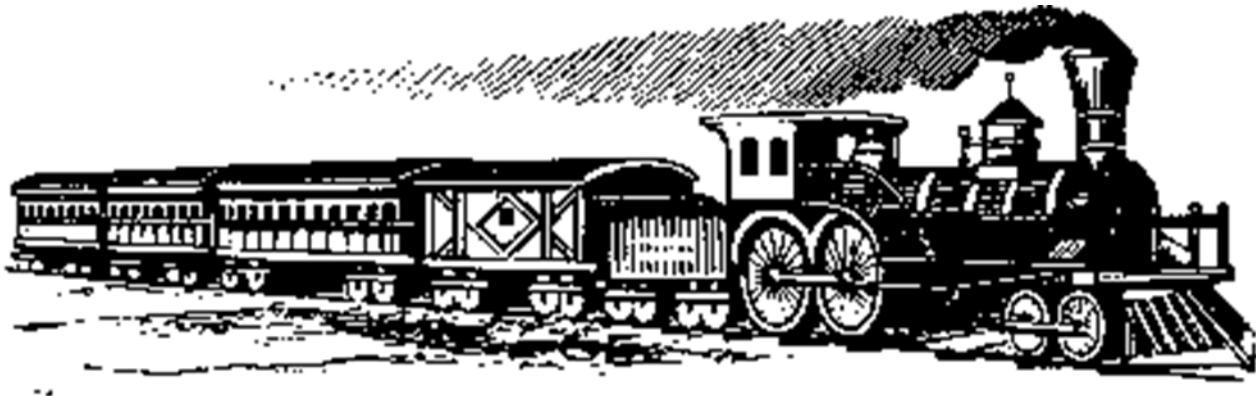


4th Annual McPherson Model Train Convention and Expo

Get ready, McPherson! We've got a packed-out event in store in January including several returning exhibits and vendors as well as a number of new ones! Free Trolley rides on Saturday! PANCAKES and BISCUITS AND GRAVY sold on Sunday! Your ticket gets you into BOTH days!

2025 GARDEN CITY MODEL TRAIN SHOW

Boot Hill Model Railroad Club



**Garden City, Kansas
Finney County Fairgrounds
West Pavilion**

601 W. Lake Ave Garden City

March 8th & 9th 2025

Saturday 10 am to 5 pm; Sunday 11 am to 4 pm

BIGGEST LITTLE TRAIN SHOW AROUND

**Admission: \$6 for adults
Children 10 and under free with adult admission**

For more information contact:

Jim Adams
620-290-1054
adamsarabians@hotmail.com

Steve Weidner
620-290-1862
sweidner@ucom.net

Mark Fisher
620-260-5560
markfish@ucom.net

Robert Hahn
620-271-8365
robertlh@wbsnet.org

Date Book

November 2024

2nd & 3rd **Oklahoma City Train Show** Oklahoma City, OK.
Sat & Sun <https://www.okctrainshow.com/>

17th **Mid-America Train & Toy Show** Kansas City, MO.
Saturday <https://www.midamericatrainandtoyshow.com/>

2025

January 2025

11th & 12th **Model Train Convention & Expo** McPherson, KS.
Sat & Sun <https://allevents.in/mcpherson/4th-annual-mcpherson-model-train-convention-and-expo/200026863551426>

February 2025

1st & 2nd **Wichita Train Show & Swap Meet** Wichita, KS.
Sat & Sun <https://www.facebook.com/wichitatrainshow/>

March 2025

8th & 9th **2025 Garden City Model Train Show** Garden City, KS.
Sat & Sun

MeWe



Posts Photos & Videos About Analytics Schedule Notifications Settings

You can also follow the **Western Kansas Division** on MeWe...

<https://mewe.com/westernkansasdiv/feed>

The *Main Line*

Publisher & Editor: Robert A. Simmons

The newsletter of the Western Kansas Division is published monthly for no charge by Robert A. Simmons, Division Superintendent / Director
Copyright 2024, by Robert A. Simmons, all rights reserved.

If you have a change of e-mail address, or no longer wish to receive the newsletter, please contact Robert Simmons
Trainman55@hotmail.com or 10594 W. Briarwood Dr.– Dodge City, KS. 67801 or call (620) 521-3591

Please send all inquiries, ideas, or submissions to: trainman55@hotmail.com